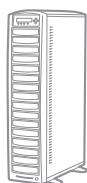


Disc Duplicator
User Guide
Version x.10



Xerox LightScribe Disc Duplicator User Guide



Warning

This Xerox CD/DVD/LightScribe duplicator is meant for back up and distribution of original data authored or owned by the user. Any duplicated discs made from a this CD/DVD/Blu-Ray/LightScribe duplicator is the copyright ownership of the author or company which owns the source disc. Any unauthorized copying, editing, or any part thereof of a copyright disc is strictly prohibited. We discourage the use of any such action that gives rise to criminal intent and prosecution.

The seller of this product is not responsible for any potential illegal actions of the user due to activities beyond the scope of the products intended use.

Copyrights and Trademarks

All rights reserved. No part of this publication may be reproduced in any medium printed or electronic without the prior written permission from the manufacturer. Copyright ©2000-2008. All rights reserved

Table of Contents

Chapter 1: Introduction & Manual Overview	1-14
Before you start	1-14
Package Contents	1-16
Chapter Overview	1-16
 Chapter 2: Getting to know your system	2-17
Duplicator Overview	2-17
LCD Front Panel	2-18
Inputting Characters / Numbers	2-19
 Chapter 3: Basic Operations	2-20
Make Disc-to-Disc Copies	2-20
Section 1: Selecting the Copy Source	2-21
Section 2: Making Copies from Reader (when the reader is selected as the source drive)...	2-22
Make Hard Drive-to-Disc Copies	2-26
Section 1: Loading Master Disc content into the Hard Drive as a partition/image	2-27
Section 2: Selecting the Copy Source to the Hard Drive	2-30
Section 3: Making Copies from an existing partition/image of the Hard Drive	2-31
 Design and Printing Labels	2-35
Section 1: Design your labels with LightScribe Template Labeler	2-35
Section 2: Selecting the Print Source of the system as the Reader	2-38
Section 3: Print copies of your LightScribe label with the LightScribe Label CD you've created	2-39

Table of Contents

- Select the Duplication Speed 3-45
- Mix Audio Tracks 3-47
- Change the Setup settings 3-54

- Chapter 4: Menu Overview 4-55**
- Appendix A : LightScribe Software Setup**
- Instructions 4-67**
- Appendix B : Software Installation Guide for**
- accessing the Hard Drive on a Computer 4-69**
- Appendix C : Creating an ISO DVD/CD Image File .. 4-72**
- Appendix D : Troubleshooting 4-74**
 - Frequently Asked Questions 4-74
 - Error Code 4-79

Safety Introduction

Notices and Safety

Please read the following instructions carefully before operating the machine and refer to them as needed to ensure the continued safe operation of your machine.

Your Xerox product and supplies have been designed and tested to meet strict safety requirements. These include safety agency evaluation and certification, and compliance with electromagnetic regulations and established environmental standards.

The safety and environment testing and performance of this product have been verified using Xerox materials only.

Warning:

Unauthorized alterations, which may include the addition of new functions or connection of external devices, may impact the product certification. Please contact your Xerox representative for more information.

Marks, Labels

Symbols: All warnings and instructions marked on or supplied with the product should be followed.

Warning: This symbol alerts users to areas of the equipment where there is the possibility of personal injury.

FCC Notices For The USA

This equipment has been tested and found to comply with the limits for a Class B digital device, pursuant to Part 15 of the FCC Rules. These limits are designed to provide reasonable protection against harmful interference in a residential installation. This equipment generates, uses and can radiate radio frequency energy and, if not installed and used in accordance with the instructions, may cause harmful interference to radio communications. However, there is no guarantee that interference will not occur in a particular installation. If this equipment does cause harmful interference to radio or television reception, which can be determined by turning the equipment off and on, the user is encouraged to try to correct the interference by one or more of the following measures:

- Reorient or relocate the receiving antenna.
- Increase the separation between the equipment and receiver.
- Connect the equipment into an outlet on a circuit different from that to which the receiver is connected.
- Consult the dealer or an experienced radio/TV technician for help.

(Reference CFR 47 Part 15 Section 15.21)

Changes or modifications to this equipment not specifically approved by the Xerox Corporation may void the user's authority to operate this equipment.

Operational Safety Information

Operational Safety Information

Your Xerox equipment and supplies have been designed and tested to meet strict safety requirements. These include safety agency examination, approval, and compliance with established environmental standards.

To ensure the continued safe operation of your Xerox equipment, follow these safety guidelines at all times:

Do These:

- Always follow all warnings and instructions that are marked on or supplied with the equipment.
- Before cleaning this product, unplug the product from the electrical outlet. Always use materials specifically designated for this product, the use of other materials may result in poor performance and create a hazardous situation.



Warning: Do not use aerosol cleaners. Aerosol cleaners can be explosive or flammable when used on electromechanical equipment

- Always exercise care when moving or relocating equipment.
- Always locate the machine on a solid support surface (not on plush carpet) that has adequate strength to support the weight of the machine.
- Always unplug this equipment from the electrical outlet before cleaning.

Do Not Do These:

- Never use a ground adapter plug to connect the equipment to a power outlet that lacks a ground connection terminal.
- Never attempt any maintenance function that is not specifically described in this documentation.
- Never obstruct ventilation openings. They are provided to prevent overheating.
- Never remove covers or guards that are fastened with screws. There are no operator serviceable areas within these covers.

- Never locate the machine near a radiator or any other heat source.
- Never push objects of any kind into the ventilation openings.
- Never place this equipment where people might step on or trip on the power cord.

Electrical Safety Information

- 1 The power receptacle for the machine must meet the requirements stated on the data plate on the rear of the machine. If you are not sure that your electrical supply meets the requirements, please consult your local power company or an electrician for advice.
- 2 The socket outlet shall be installed near the equipment and shall be easily accessible.
- 3 Use the power cable that is supplied with your machine. Do not use an extension cord or remove or modify the power cord plug.
- 4 Plug the power cable directly into a correctly grounded electrical outlet. If you are not sure whether or not an outlet is correctly grounded, consult an electrician.
- 5 Do not use an adapter to connect any Xerox equipment to an electrical outlet that lacks a ground connection terminal.
- 6 Do not place this equipment where people might step or trip on the power cable.
- 7 Do not place objects on the power cable.
- 8 Do not push objects into slots or openings on the machine. Electrical shock or fire may result.
- 9 Do not obstruct ventilation openings. These openings are used to provide proper cooling to the Xerox machine.

Electrical Supply

- 1 This product shall be operated from the type of electrical supply indicated on the product's data plate label. If you are not sure that your electrical supply meets the requirements, please consult a licensed electrician for advice.



Warning: This equipment must be connected to a protective earth circuit. This equipment is supplied with a plug that has a protective earth pin. This plug will only fit into an earthed electrical outlet. This is a safety feature. If you are unable to insert the plug into the outlet, contact a licensed electrician to replace the outlet.



- 2 Always connect equipment to a correctly grounded power outlet. If in doubt, have the outlet checked by a qualified electrician.

Disconnect Device


The power cable is the disconnect device for this equipment. It is attached to the back of the machine as a plug-in device. To remove all electrical power from the equipment, disconnect the power cable from the electrical outlet.

Emergency Power Off

If any of the following conditions occur, turn off the machine immediately and disconnect the power cable(s) from the electrical outlet(s). Contact an authorized Xerox Service Representative to correct the problem:

- The equipment emits unusual odors or makes unusual noises.
- The power cable is damaged or frayed.
- A wall panel circuit breaker, fuse, or other safety device has been tripped.
- Liquid is spilled into the machine.
- The machine is exposed to water.
- Any part of the machine is damaged

Maintenance Information

- 1 Any operator product maintenance procedures will be described in the user documentation supplied with the product.
 - 2 Do not carry out any maintenance on this product which is not described in the customer documentation.
-  **Warning:** Do not use aerosol cleaners. Aerosol cleaners can be explosive or flammable when used on electromechanical equipment.
- 3 Use supplies and cleaning materials only as directed in the Operator section of this manual.
 - 4 Do not remove covers or guards that are fastened with screws. There are no parts behind these covers that you can maintain or service.

Product Safety Certification

This product is certified by the following Agency using the Safety standards listed

Agency	Standard
Underwriters Laboratories Inc.	UL60950-1
Underwriters Laboratories Inc.	CSA C22.2 No. 60950-1-03
SPORTON International Inc.	EN 55022:1998/A1:2000/A2:2003 Class B, EN 61000-3-3:1995/A1:2001, EN 55024:1998/A1:2001/A2:2003

Regulatory Information

Certifications in Europe

CE Mark (European Union): The CE mark applied to this equipment symbolizes Xerox's declaration of conformity with the following applicable Directives of the European Union as of the dates indicated:

2006/95/EC

December 12, 2006 Council Directive 2006/95/EC as amended. Approximation of the laws of the member states related to low voltage equipment.

2004/108/EC

December 15, 2004 Council Directive 2004/108/EC as amended. Approximation of the laws of the member states related to electromagnetic compatibility.

A full declaration of conformity, defining the relevant directives and referenced standards, can be obtained from your Authorized local dealer.

Warning: In order to allow this equipment to operate in proximity to Industrial Scientific and Medical (ISM) equipment, the external radiation from the ISM equipment may have to be limited or special mitigation measures taken.

Product Recycling & Disposal

USA & Canada

CE Mark (European Union)

Xerox operates a worldwide equipment take back and reuse/recycle program. Contact your Xerox sales representative (1-800-ASK-XEROX) to determine whether this Xerox product is part of the program. For more information about Xerox environmental programs, visit www.xerox.com/environment.html.

If you are managing the disposal of your Xerox product, please note that the product may contain lead, mercury, Perchlorate, and other materials whose disposal may be regulated due to environmental considerations. The presence of these materials is fully consistent with global regulations applicable at the time that the product was placed on the market. For recycling and disposal information, contact your local authorities. In the United States, you may also refer to the Electronic Industries Alliance web site: <http://www.eiae.org/>.

European Union

WEEE Directive 2002/96/EC

Some equipment may be used in both a domestic/household and a professional/business application.

Professional/Business Environment

Application of this symbol on your equipment is confirmation that you must dispose of this equipment in compliance with agreed national procedures. In accordance with European legislation, end of life electrical and electronic equipment subject to disposal must be managed within agreed procedures.

Domestic/Household Environment

Application of this symbol on your equipment is confirmation that you should not dispose of the equipment in the normal household waste stream. In accordance with European legislation, end of life electrical and electronic equipment subject to disposal

must be segregated from household waste.

Private households within EU member states may return used electrical and electronic equipment to designated collection facilities free of charge. Please contact your local disposal authority for information.

In some member states, when you purchase new equipment, your local retailer may be required to take back your old equipment free of charge. Please ask your retailer for information.

Prior to disposal, please contact your local dealer or Xerox representative for end of life takeback information.

Xerox EH&S Contact Information

Contact Information

For more information on Environment, Health, and Safety in relation to this Xerox product and supplies, please contact the following customer help lines:

USA: 1-800 828-6571

Canada: 1-800 828-6571

Europe: +44 1707 353 434

Product Safety information for US

www.xerox.com/about-xerox/environment/enus.html

Product Safety information for EU

www.xerox.com/about-xerox/environment/eneu.html

Chapter 1

Introduction & Manual Overview The Xerox CD/DVD LightScribe Duplicator is a reliable, high performance, high speed, standalone manual tower duplicator with the added LightScribe printing feature. With its professional industrial design and simple beginner user interface, it will make your disc publishing experience easier than ever.

Before you start

Before you start using this duplicator, please read the following to ensure proper operation:

1 Duplicator Limitations

The duplicator will not copy any CD or DVD discs that have Copy Protection encoded inside. Typically, the movies you purchase or rent from the store will contain copy protection. In addition to the copy protection limitation, the duplicator cannot copy across formats. This means that you cannot copy a DVD master onto a recordable CD or vice versa. In addition, you cannot copy the same formats if the discs have different maximum capacity limitations. This means that you cannot copy a single layer DVD onto a double/dual layer DVD or vice versa. The recordable blanks must be the same format and maximum capacity as the master disc you intend to duplicate.

2 Temperature Warning

If the duplicator was stored in a location where the temperature dropped below 32°F (0°C) within the past 24 hours, please leave the duplicator in a warm room with temperatures at least 65°F (19°C) for 4 hours prior to powering it on for the first time. Failure to do so may cause irreparable harm and prevent the duplicator from functioning.

3 Maintenance

It is very important to operate and keep the duplicator in a dust free, clean environment since dust is the number 1 killer for optical recording devices. Failure to do so may severely damage your duplicator. We strongly suggest you place an Air Cleaner next to the duplicator and constantly use the Air Duster (Can Air) to clear off any dust on the surface of the duplicator.



Warning: Do not try to use the Air Duster to clean the duplicator while the reader/writer trays are open. In doing so, you may inadvertently blow dust into the recording device and damage the recording device.

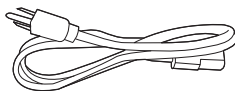
- 4 Proper Shutdown**
- To avoid possible duplicator failures, you need to shutdown the duplicator properly. To shutdown the duplicator, you need to press the Up or Down Arrow button to “18. Shutdown”, then press >> and follow instructions on the screen to shutdown the duplicator properly. Turning off your duplicator without performing this function will increase the risk of damaging your duplicator.

Notice: While specific drive manufacturers, sizes, and part numbers are shown in this manual, the market place for drives is constantly changing. We install the best drives that are available at the time of manufacture, so the actual drives in your system may be different than the ones shown in this manual. This also applies to the hard disk and the drive speed options. The hard disk size shown reflects the size of the disk actually installed in your duplicator. The drive speed options shown reflect the capabilities of the drives installed in your duplicator. Please take this into consideration when using this manual.

Package Contents



Xerox User Manual &
Software Installation CD



Power Cord Cable

Chapter Overview

Chapter 2: Getting to know your duplicator

This chapter describes the physical features and instructions on how to operate your duplicator.

Chapter 3: Basic Operations Guide

This chapter describes how to perform basic operations like Making Copies, Design and Printing Labels, Changing Speed, etc.

Chapter 4: Menu Overview

This chapter describes what every function/setting does.

Appendix A: LightScribe Software Setup Instructions

This section provides an easy walkthrough on how to install the LightScribe software needed to generate the label files.

Appendix B: Software Installation Guide for Accessing the Hard Drive on a Computer.

This section provides an easy walkthrough on how to install the Drag & Drop software that is needed to access the internal hard drive by a PC.

Appendix C: Creating an ISO DVD/CD Image file.

Appendix D: Troubleshooting

This section provides many solutions on frequently asked questions and provides insights on duplicator error codes.

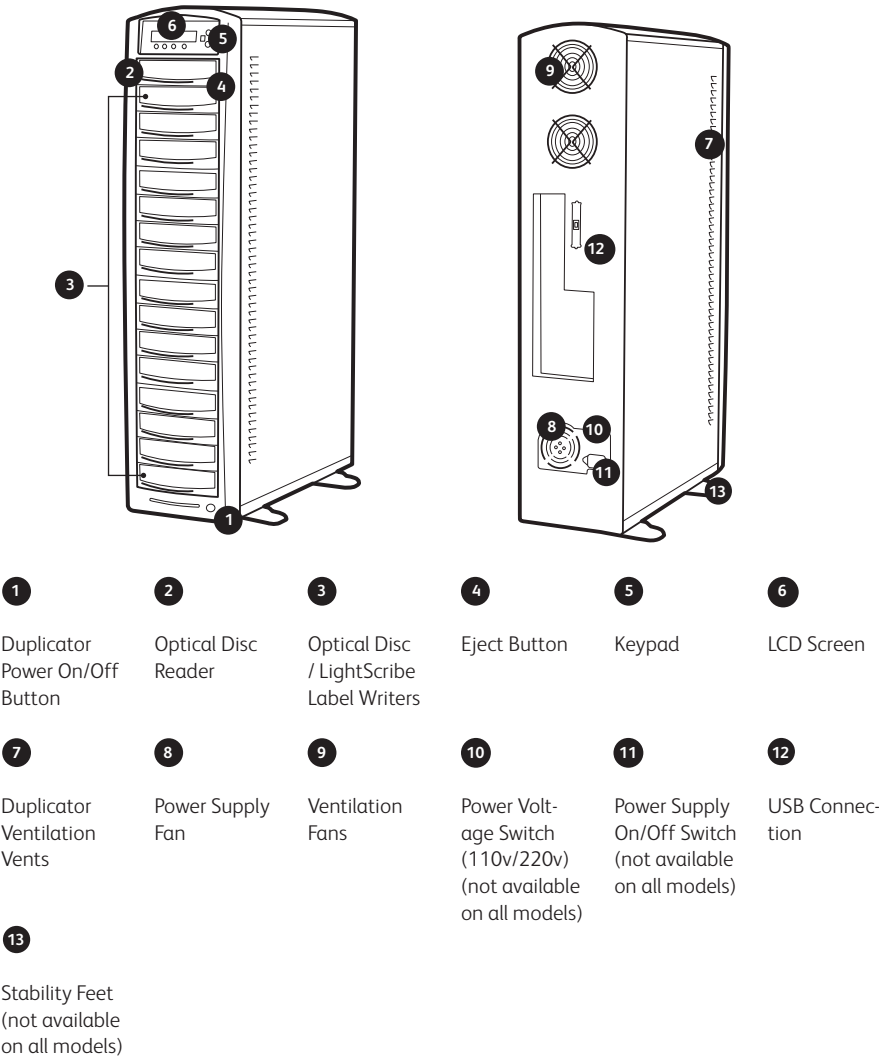
Chapter 2 : Getting To Know Your System

Duplicator Overview



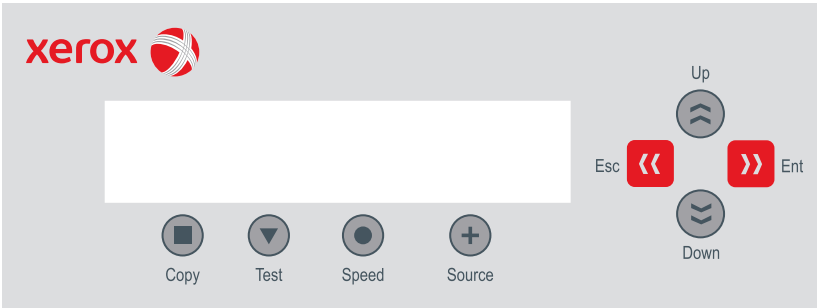
Figure 1-1 shows the controls and display found on the Xerox LightScribe Duplicator. Actual size will vary based upon the model you purchase.

Figure 1-1 Duplicator Controls and Display



LCD Front Panel

Figure 1-2 shows the front panel for the duplicator.



	Up (Menu/Option Scroll Up)
	Down (Menu/Option Scroll Down)
	Forward; Enter; OK; Execute the function
	Backward; Escape; go back to the previous function
	Shortcut to make a copy
	Shortcut to make simulation of copying process
	Shortcut to change the duplication speed
	Shortcut to change your master reading source

Inputting Characters/Numbers

When you operate this duplicator, there are cases when you may be required to enter a number or a name through the duplicator's LCD panel. An example could be entering the Counter quantity or a Hard Drive Partition/Image name.

To enter an alpha numeric character, you need to use the up or down button to scroll through various numbers or letters then use the >> (Forward/Enter button) or << (Back/Escape button) to move the cursor position right or left. Once you've finished, move the cursor to OK and press the >> button.

For example, if you want to enter a partition name of "FUN1", do the following:

- a Press the down button repeatedly until "F" is displayed.
- b Press the >>button once to move the cursor to the next position.
- c Press the down button repeatedly until "U" is displayed.
- d Press the >>button once to move the cursor to the next position.
- e Press the down button repeatedly until "N" is displayed.
- f Press the >>button once to move the cursor to the next position.
- g Press the down button repeatedly until "1" is displayed.
- h Press the >>button repeatedly to move the cursor to OK. Then, press the >>button once to submit your selection and proceed to next step.



Note

The below example is meant as only an illustration for entering a partition name. For a more detailed procedure description on how to create a new partition/image, please refer to Section 1: Loading Master Disc content into the Hard Drive as a partition/image of "Making Hard Drive-to-Disc Copies" on page 27.

Edit Partition Name:
[FUN1] , OK?



Note

When you enter a number, normally it asks for a 4 digit number. If your number is less than 4 digits, you need to fill the leading spaces with 0s (any leading zeros will be skipped). An example of that would be 0234 (Two hundred and thirty four) or 0010 (ten).

Chapter 3: Basic Operations

Make Disc-to-Disc Copies

This process will copy your master disc onto single or multiple blank discs simultaneously. However, due to its simultaneous nature, a good conditioned master disc and a lower recording speed is recommended for higher success rates and better quality duplications.

For a disc-to-disc copy

The copy source can be either of these devices:

- **The reader:** The reader normally is the 1st drive from the top of the duplicator and is most often the source typically used when making disc-to-disc copies.
- **Any of the writers:** One of the writers can also be used as the copy source when making disc-to-disc copies. This option is typically only used when the reader is either bad or unable to read the master disc.

Since the duplicator has a hard drive installed, it will simultaneously load the master disc image into the hard drive while copying from the reader drive to the writer drives during the first round of the copy process; Then starting from the 2nd round, all copies will be made from the hard drive for enhanced performance and reliability. If you prefer not to utilize this feature, please change the “Duplication Mode” setting to “On the Fly” under the “Setup” menu. Please refer to page 54 for more details.

Section 1: Selecting the Copy Source.

When you turn on your duplicator, after it has booted up, you should see the following signifying your duplicator is ready.

Duplicator2.20
1. Copy

Step 1: Use the up or down arrow button to navigate to the Select Source menu.

Duplicator2.20
7. Select Source

Step 2: Press >> to enter the Select Source menu and you shall see a screen similar to this:

Drive 0Port x.x
ASUSDVD-RE818A

Step 3: If you plan to use the Reader as the source, use the up or down buttons to locate Drive 0 (1st drive) and press >> to select it.

Drive 0Port x.x
ASUSDVD-RE818A

If you would like to use one of the Writers as the source, use the up or down button to locate Drive 1 or higher and press >> to select it.

Drive 1Port x.x
PioneerDVD-RW DVR-1



Note

If the drive you've selected is the same as the original source, the duplicator will NOT respond to the >> button. Please press the << button to go back to the main menu.

Once the source has been selected, you will be guided to the main menu. You should see the following screen:

Duplicator2.20
7. Select Source

Section 2: Making Copies from the Reader (when the Reader is selected as the source drive).

Step 1: Use the up or down arrow button to navigate to the Copy menu:

Step 2: Press the >> button to enter the Copy menu. You should then see the Counter feature screen.

The Counter feature will let you choose how many copies you want to make for your project. It allows the duplicator to count the number of copies you've made for this job and prompt you when the desired number has been achieved.

You can choose not to input your desired number of copies if you prefer to copy continuously with no interruption. (It will still count the number of copies you've made for this job, but it will not notify you when to stop.) To do so, simply press >>button when you see the "No Counter" on the 2nd line of the screen below:

Or, you can choose to enter the desired number of copies for this job by following the simple procedure below:

- a Simply press the up or down button to the following screen:

Duplicator 2.20
1. Copy

Counter:
No Counter



Note

The Counter feature is for your convenience only, and will allow you to make more copies than the amount desired, if so required.

Counter:
No Counter

Counter:
Specify Counter

- b** Then press the >> button to submit. You should see the following Specify Counter screen:
- c** Please refer to the “Input Name and Number” section of “Chapter 2: Getting to know your Duplicator” page 19, on how to enter the desired amount. Then press >> to continue to the next step.

Step 3: Once the Counter selection is submitted, you shall see the following Preparation screen and the corresponding trays that do not contain disc(s) in them will automatically be ejected:

Step 4: After you’ve placed your master disc and blank discs in the drive(s), please allow 5-10 seconds for the duplicator to detect them. After they have been recognized, then you shall see the following screen:

- The “7” indicates there are seven discs recognized by the Writer. Actual quantity may be different depending on the size of your machine or the number of discs you inserted.

Specify Counter:
[] OK?

Preparing
Waiting for Master

OR

Preparing
Waiting for Blanks



Note

If either one of the above screens is displayed for more than 2 minutes after you have inserted your master disc or blank discs, please check the quality of the discs.

Preparing
7 Discs Detected, Go?



Note

By default, the “Auto Start” setting is set to “Auto”. Therefore, if your duplicator is not completely filled with blank discs and there is no activity within 30 seconds, or if all writers are filled and the duplicator detects this, the duplicator will start automatically.

Once the number of blank discs you inserted matches the number of discs detected on the screen, press >>(if you are not using Auto Start or wish to speed up the process) to confirm and the following Processing screen will appear.

If the number of blank discs you inserted does not match the number of discs detected on the screen, please give 10-15 seconds for the duplicator to recognize all of your blank discs.

Step 5: After 2 or 3 seconds of processing time, one of the following Copy progress screens will appear. The left-hand screen is shown when “Specify Counter” is selected and the right-hand screen is shown when “No Counter” is selected.

Processing
Please Wait



It is normal to see the progress indicator stay at 0-10% and 100% for approximately 30 seconds for CD duplication and up to 1 minute for DVD duplication. That is caused by the initializing and finalizing stages.

“Specify Counter”

Copying . . . 4012MB
0/21 10% 401MB

- 4012MB indicates the total capacity of your master disc.
- 0/21 indicates you have a project size of twenty-one copies and you have made zero copies thus far.
- 10% indicates the current percentage of the copying progress.
- 401MB indicates the current amount of data that has been copied from the master disc.

“No Counter”

Copying . . . 4012MB
0 10% 401MB

- 4012MB indicates the total capacity of your master disc.
- 0 indicates you have made zero copies thus far.
- 10% indicates the current percentage of the copying progress.
- 401MB indicates the current amount of data that has been copied from the master disc.

Step 6: Once the duplication run is completed, the successful copies will be ejected and you shall see the following screen.

- “PASS 7” indicates that you’ve just made 7 successful copies.
- “FAIL 0” indicates that you have no failure in this run.
- “7” indicates that you’ve successfully copied 7 copies so far.

Step 7: Remove the successful copies and refill the trays with additional blank media to continue making more copies. You can also press the << button to terminate your project and go back to the main menu.

If you’ve specified a counter value for your project and your project is completed, you shall see the following screen:

Pass 7 Fail 0 (7)
Waiting for Blanks



Note

If you happen to have any failed discs (bad copy), the failed disc(s) will not be ejected automatically. You need to manually eject them and throw them away if they are write once recordable disc(s).

Pass 21 Fail 0
Job Completed! Press OK to Finish

Making Hard Drive-to-Disc Copies.

Copying from the hard drive is the best way to make copies. Overall, there are four benefits of copying from the hard drive.

- **Performance:** Copying from the hard drive will enable the writer drives to boost the copying performance to its limit.
- **Stability:** Copying from hard drive will stabilize the duplication process compared to disc-to-disc duplication.
- **Durability:** The hard drive is a more durable storage device than recordable discs. The recording surface of a recordable disc is exposed and can easily be scratched on its surface, while hard drives are covered with metal and mounted inside the duplicator protecting it from incidental damage.
- **Convenience:** With your master disc(s) stored inside the hard drive, you can have access to each one easily. There is no need to carry your master discs every time you want to make a copy; they are all stored inside the duplicator.

A partition/image will be created whenever you begin to load master disc content into the hard drive. The number of images the hard drive can hold is determined by the capacity of your hard drive and the size of every master disc image you transferred into the hard drive.



Throughout this manual, the term partition(s) is also used to refer to image files in the hard drive.



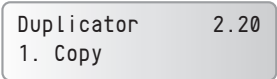
Hard Drive Manufactures use conversion rate of 1GB = 1 Billion Bytes or 1000^3 Bytes. However, most Operating Duplicators, including our Duplication Duplicator use standard conversion rate of 1GB = 1.074 Billion Bytes or 1024^3 Bytes. Therefore, for an advertised 160GB Hard Drive (160 Billion Bytes), the true capacity base on our duplicator's standard is actually 149GB.

The following steps will show you how to load your master disc into the installed hard drive as an image and copy the stored image onto blank discs.

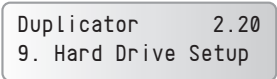
Section 1: Loading Master Disc content into the Hard Drive as a partition/image.

* Please skip to Section 3 if you’ve already transferred your CD/DVD image file or LightScribe label file into the duplicator’s hard drive from your Computer. See page 31 for more detail.

When you turn on your duplicator, after it has booted up, you should see the following signifying your duplicator is ready.

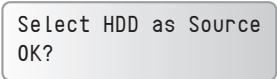


Step 1: Use the up or down arrow button to navigate to the Hard Drive Setup menu.

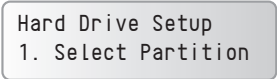


Step 2: Press >> button to enter the Hard Drive Setup menu.

If the current source is not Hard Drive, you will see the screen below. Please press the >>button once to proceed.



Once you’ve entered the Hard Drive Setup menu, you will see following screen:



Step 3: Use the up or down button to locate the Load Partition menu; as shown in the reference screen shot below.

Step 4: Press the >> key to enter the Load Partition menu and you should see the following screen.

You have a choice when loading your master disc content into the hard drive by pressing the up or down button to find your desired partition naming method:

Option 1: A new partition/image

Screen Shot (New Partition)

Option 2: Overwrite one of the existing partitions/images (if any exists, including the reserved partition/image)

Screen Shot (Overwrite)

Option 3: Choose Auto Generate to have the duplicator automatically generate a partition/image name for you.

Screen Shot (Auto Gen)

After selecting an option from 1 of the above 3 choices, press the >> button to submit your selection.

- If you have chosen to create a new partition/image, you should see the following screen after you submit your selection.

Please refer to the “Input Name and Number” section of “Chapter 2: Getting to know your Duplicator” on page 19, to enter the desired title. Then press the >> to continue to the next step.

Hard Drive Setup
2. Load Partition

Load Partition [160GB]
Load>New Partition

160GB indicates the total available capacity of the system’s hard drive – this number will vary based on the size of the hard drive installed in your duplicator.

Edit Partition Name
[] OK?



Note

After you submitted a hard drive partition/image name, the duplicator will automatically append a partition/image name suffix of .VEF.

- If you have chosen to overwrite one of the existing partitions/images, you should see the following screen after you submit your selection.
- If you have chosen Auto Generate, Then precede to the next step.

Step 5: Please place your master disc into the Reader or the 1st Writer if there's no Reader installed in your duplicator. Once the duplicator recognizes your master disc, the loading progress screen will be displayed, as show below:

```

Loading . . .      4012MB
FUN1.VEF  10%  401MB
  
```

- 4012MB indicates the total capacity of your master disc.
- FUN1.VEF indicates the name of the partition/image where the data is being loaded into.
- 10% indicates the current percentage of the master disc that has been loaded into the hard drive.
- 401MB indicates the current amount of data that has been copied from the master disc.

Step 6: Once the loading process is completed, you should see the following screen:

```

This Will Overwrite
[Fun.VEF      ]OK?
  
```

Then press >> to continue to the next step.

```

Load Partition OK!
Press OK to Continue
  
```

You can then press the >> button to go back to the Hard Drive Setup menu. Then press the << button to return to the Main menu. You should see the following screen:

```

Duplicator      2.20
9. Hard Drive Setup
  
```

Section 2: Selecting the Copy Source to the Hard Drive.



Note

Ignore this section and proceed to Section 3 if you have just completed Section 1: Loading Master Disc content into the Hard Drive as an image as this process will automatically switch the source to the hard drive.

Step 1: Use the up or down arrow button to navigate to the Select Source menu.

Step 2: Press >> button to enter the Select Source menu and you shall see a screen similar to below:

Step 3: Use the up or down button to locate the Hard Drive and press the >> button to select it.

Duplicator	2.20
7. Select Source	

Drive 0	Port x.x
ASUS	DVD-E818A

HARD DRIVE	Port x.x
HITACHI	HDS721616PL



Note

If the hard drive has already been pre-selected as the source, the duplicator will NOT respond to the >> button. Please press the << button to go back to the main menu.

Once the source has been selected, you will be guided to the Main menu. You should see the following screen:

Duplicator	2.20
7. Select Source	

Section 3: Making Copies from an existing partition/image of the Hard Drive.

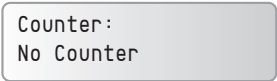
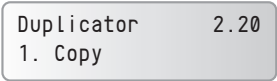
Step 1: Use the up or down arrow button to navigate to the Copy menu:

Step 2: Press the >> button to enter the Copy menu. You should then see the Choose Partition menu.

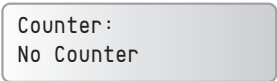
Step 3: Use up or down button to choose the desired partition/image to copy from and press the >> button to submit your selection. You should then see the Counter feature screen.

The Counter feature will let you choose how many copies you want to make for your project. It allows the duplicator to count the number of copies you’ve made and prompt you when the desired number of copies has been made for this job.

You can choose not to input your desired number of copies if you prefer to copy continuously with no interruption. (It will still count the number of copies you’ve made for this job, but it will not notify you when to stop.) To do so, simply press the >> button when you see the “No Counter” on the 2nd line of the screen below:



The Counter feature is for your convenience only, and will allow you to make more copies than the amount desired, if so required.



Or, you can choose to enter the desired number of copies for this job by following this simple procedure:

- a Press the up or down button to following screen:
- b Then press the >> button to submit, and you should see the following Specify Counter screen:
- c Please refer to the “Input Name and Number” section of “Chapter 2: Getting to know your Duplicator” to enter the desired amount. Then press the >> to continue on to the next step.

Step 4: Once the Counter selection is submitted, you shall see the following Preparation screen and the corresponding trays that do not contain disc(s) in them will automatically be ejected:

Step 5: After you’ve placed your blank discs into the drives, please allow 5-10 seconds for the duplicator to detect them. After they have been recognized, you shall see the following screen:

- The “7” indicates there are seven discs recognized by the Writer. Actual quantity may differ depending on the size of your machine or the number of discs you inserted.

Counter:
Specify Counter

Specify Counter
[] OK?

Preparing
Waiting for Blanks



Note

If the above screen is displayed for more than 2 minutes after you have inserted your blank discs, please check the quality of the discs.

Preparing
7 Discs Detected, Go?



Note

By default, the “Auto Start” setting is set to “Auto”. Therefore, if your duplicator is not completely filled with blank discs and there is no activity within 30 seconds, or if all writers are filled and the duplicator detects this, the duplicator will start automatically.

Once the number of blank discs you inserted matches the number of discs detected on the screen, press >>(if you are not using Auto Start or wish to speed up the process) to confirm and the following Processing screen will appear.

Step 6: After 2 or 3 seconds of processing time, one of the following Copy progress screens will appear. The left-hand screen is shown when “Specify Counter” is selected and the right-hand screen is shown when “No Counter” is selected.

Processing...
Please Wait

If the number of blank discs you inserted does not match the number of discs detected on the screen, please give 10-15 seconds for the duplicator to recognize all of your blank discs.



It is normal to see the progress indicator stays at 0-10% and 100% for approximately 30 seconds for CD duplication and up to 1 minute for DVD duplication. That is caused by the initializing and finalizing stage.

“Specify Counter”

Copying... H4012MB
0/21 10% 401MB

- H indicates you are copying from a hard drive partition/image.
- 4012MB indicates the total capacity of your master disc image.
- 0/21 indicates you have a project size of twenty-one copies and you have made zero copies thus far.
- 10% indicates the current percentage of the copying progress.
- 401MB indicates the current amount data that has been copied from the master disc image.

“No Counter”

Copying... H4012MB
0 10% 401MB

- H indicates you are copying from a hard drive partition/image.
- 4012MB indicates the total capacity of your master disc image.
- 0 indicates you have made zero copies thus far.
- 10% indicates the current percentage of the copying progress.
- 401MB indicates the current amount data that has been copied from the master disc image.

Step 7: Once the duplication run is completed, the successful copies will be ejected and you shall see the following screen.

- “PASS 7” indicates that you’ve just made 7 successful copies.
- “FAIL 0” indicates that you have no failure in this run.
- “7” indicates that you’ve successfully copied 7 copies so far.

Step 8: Remove the successful copies and refill the trays with additional blank media to continue making more copies. You can also press the << button to terminate your project and go back to the main menu.

If you’ve specified a counter value for your project and your project is completed, you shall see the following screen:

Pass 21 Fail 0
Job Completed! Press OK to Finish

You can then press >> to go back to main menu.

PASS 7 FAIL 0(7)
Waiting for Blanks



If you have any failed discs (bad copy) during a run, the failed disc(s) will not be ejected automatically. You need to manually eject them and throw them away if they are write once recordable disc(s).

Design and Printing Labels

The instructions covered in this section will help you design and print a label from your LightScribe Standalone Duplication duplicator.

Section 1: Design your labels with LightScribe Template Labeler and create a LightScribe Label CD.

Step 1: Launch the LightScribe Template Labeler.

- By clicking the shortcut icon on your desktop.
- Or you can find the program launch shortcut in Start > All Programs > LightScribe Direct Disc Labeling > LightScribe Template Labeler.

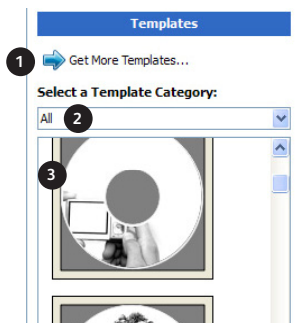
Since we use this software for design and layout purpose, please ignore the “LightScribe Disc Insertion” prompt below by pressing the OK button.

Step 2: Select Template

- Choose one of the preinstalled templates, or click on “Get More Templates” to download additional templates. (1)
- Select the Category filter function to better view and choose a template. Note that each template may appear in multiple categories. (2)
- Click on your Template choice to activate. (3)



Please note that you must install the supplied LightScribe software in order to proceed with the instructions below. If you have any difficulties installing the software, please contact Tech Support for assistance.

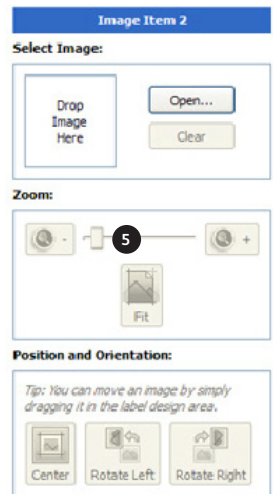
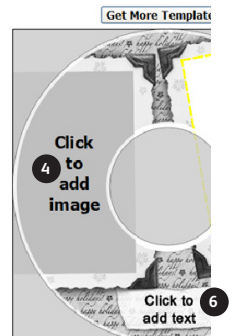


If you prefer more advanced design capabilities instead of the pre-designed templates, you can do following:

- a Design your own CD label artwork using a more advanced design software like Adobe PhotoShop
- b Export your completed CD artwork as a picture format like bmp, jpeg, png, etc.
- c Choose an empty template from the Template Labeler and add the exported CD artwork pictures into the empty template.

Step 3: Insert Text and/or Pictures

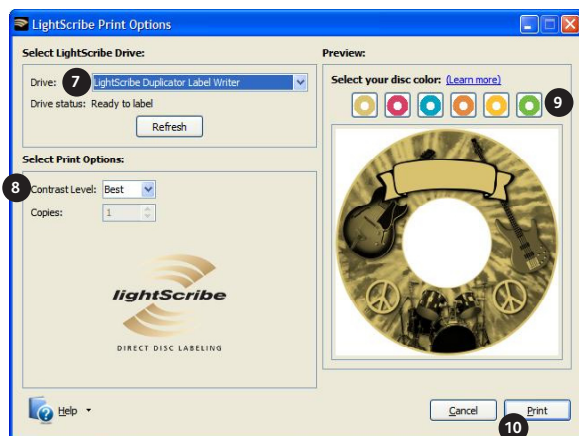
- Depending on the template chosen, you may have the option to modify text box(s) or picture(s).
- For inserting pictures, just click on the dedicated area to select the picture you'd like to use. (4)
- Use the Zoom button or the scroll wheel of your mouse to size the picture, and then drag it to the position where you want it within the selection window. (5)
- For text, just click on the text field, and then type the text you'd like to appear within the text field. Note, you can enter multiple lines of text depending on the template chosen. (6)



Step 4: Preview and Print Label

Step 5: Click on “Preview and Print” to bring up the print window.

- Select the “LightScribe Duplicator Label Writer” as the LightScribe Drive. (7)
- Select the “Best” contrast mode for the darkest print. (8)
- Select the label surface color of the disc you wish to label onto. (9)
- If you are satisfied with the preview, click “Print” to begin generating the Duplicator Label file (.lsi files). (10).



You will be asked for the location & the name of the label file(s) you wish to generate. In addition, due to the duplicator display limitation, make sure the file name does not contain any foreign characters other than 26 Greek alphabets, numerical digits, and/or some basic symbols like “.”, etc.

Step 6: Create a Label CD

- Locate the label file(s) (.lsi files) on your PC.
- Create a Data CD with the label file(s) via a CD/DVD creating software; like Nero Burning-ROM or Roxio Classic CD Creator



Do NOT place label file(s) inside any directory/folder of the Label CD. Failure to do so will result in the label file(s) not being recognized by your duplicator.

Section 2: Selecting the Print Source of the duplicator as the Reader.

When you turn on your duplicator, after it has booted up, you should see the following signifying your duplicator is ready.

Step 1: Use the up or down arrow button to navigate to the Select Source menu.

Step 2: Press the >> button to enter the “Select Source” menu and you shall see a screen similar to below:

Step 3: If you plan to use the Reader as the source, use the up or down button to locate Drive 0 (1st drive) and press the >> button to select it.

If you would like to use one of the Writers as the source, use the up or down button to locate Drive 1 or any other corresponding drives located on the duplicator and press the >> button to select it.

Once the source has been selected, you will be guided to the Main menu. You should see the following screen:

DUPLICATOR	2.20
1.Copy	

DUPLICATOR	2.20
9.Select Source	

Drive 0	Port x.x
ASUS	DVD-E818A

Drive 0	Port x.x
ASUS	DVD-E818A

Drive 1	Port x.x
Pioneer	DVD-RW DVR-1



Note

If the drive you've selected is the same as the original source, the duplicator will NOT respond to the >> button. Please press << button to go back to the main menu.

DUPLICATOR	2.20
9.Select Source	

Section 3: Print copies of your LightScribe label with the LightScribe Label CD you’ve created.

Step 1: Use the up or down arrow button to navigate to the Print menu:

Step 2: Press the >> button to enter the Print menu. You should then see the Counter feature screen.

The Counter feature will let you choose how many copies you want to print for your project. It allows the duplicator to count the number of copies you’ve made and prompt you when the desired number of copies has been made for this job.

You can choose not to input your desired number of copies if you prefer to print continuously with no interruption. (It will still count the number of copies you’ve made for this job, but it will not notify you when to stop.) To do so, simply press >>button when you see the “No Counter” on the 2nd line of the screen below:

Or, you can choose to enter the desired number of copies for this job by following the simple procedure below:

- a** Press the up or down button to the following screen:
- b** Then press the >> button to submit, and you should see the following Specify Counter screen:
- c** Please refer to the “Input Name and Number” section of “Chapter 2: Getting

DUPLICATOR2.20

2.Print

Counter:

No Counter



The Counter feature is for your convenience only, and will allow you to make more copies than the previously desired amount, if so required.

Counter:

No Counter

Counter:

Specify Counter

Specify Counter:

[] OK?

to know your Duplicator” to enter the desired amount. Then press >> to continue next step.

Step 3: Once the Counter selection is submitted, you shall see the following Preparation screen and the corresponding trays not loaded with discs will automatically eject:

Preparing
Waiting for Master



Note

If above screen is displayed for more than 2 minutes after you have inserted your master disc or blank discs, please check them for quality

Step 4: After you've placed your label disc and LightScribe printable disc(s) in the duplicator's writer drives (label side face down), please allow 5-10 seconds for the duplicator to detect the label disc. After they have been recognized, then you shall see the following screen:

Please Select Label
1. [SampleLabel.Lsi]

Please press the UP or DOWN button to select the desired label you wish to print and press the >> button to confirm your selection.

Step 5: After you've selected the desired label file, the duplicator will try to detect the LightScribe printable disc(s) in the drives. Please allow 5-10 seconds for the duplicator to detect them. After they have been recognized, then you shall see the following screen:

Preparing
7 Disc Detected, Go?



Note

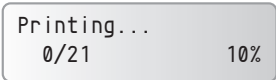
By default, the “Auto Start” setting is set to “Auto”. Therefore, if your duplicator is not completely filled with LightScribe printable discs and there is no activity within 30 seconds, or if all writers are filled and the duplicator detects this, the duplicator will start automatically.

- The “7” indicates there are seven discs recognized by the Writer. Actual quantity may differ depending on the size of your machine or the number of discs you inserted.

Once the number of LightScribe printable discs you inserted matches the number of discs detected on the screen, press >> (if you are not using Auto Start or wish to speed up the process) to confirm, and the following Processing screen will appear.

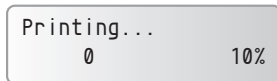
Step 6: After 2 or 3 seconds of processing time, one of the following Printing progress screens will appear. The left-hand screen is shown when “Specify Counter” is selected and the right-hand screen is shown when “No Counter” is selected.

“Specify Counter”



- 0/21 indicates you have a project size of twenty-one prints and you have printed zero discs thus far.
- 10% indicates the current percentage of the printing progress.

“No Counter”



- 0 indicates you have printed zero discs thus far.
- 10% indicates the current percentage of the printing progress.

Processing...
Please Wait

If the number of LightScribe printable discs you inserted does not match the number of discs detected on the screen, please allow 15-30 seconds for the duplicator to recognize all of your LightScribe printable discs.



It is normal to see the progress indicator staying at 0-10% and 100% for approximately 30 seconds for CD duplication and up to 1 minute for DVD duplication. This is caused by the initializing and finalizing stage.



It is normal to see the progress indicator staying at 0% and 100% for approximately 5 minutes. This is caused by the initializing and finalizing stage.

Step 7: Once the printing run is completed, the successfully printed copies will be ejected and you shall see the following screen.

- “PASS 7” indicates that you’ve just printed 7 successful discs.
- “FAIL 0” indicates that you have no failure in this run.
- “7” indicates that you’ve successfully printed 7 discs so far.

Step 8: Remove the successfully printed discs and refill the trays with additional LightScribe printable discs to continue printing more copies. You can also press the << button to terminate your project and go back to the main menu.

If you’ve specified a counter value for your project and your project is completed, you shall see the following screen:

Pass 21 Fail 0
Job Completed! Press OK to Finish

You can then press the >> to go back to the main menu.

PASS 7 FAIL 0 (7)
Please insert Label Disc

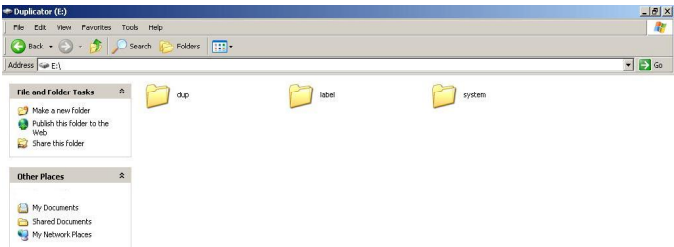


If you happen to have any failed discs (bad print), the failed disc(s) will not be ejected automatically. You need to manually eject them and you can re-use them in the next run, however, the re-print will make your copies look darker than your original design.

Loading a Master Disc Image or LightScribe Label file from your Computer

The Xerox CD/DVD LightScribe Duplicator also has a feature that allows you to drag and drop your pre-generated ISO CD/DVD image files or pre-generated LSI LightScribe label file into the duplicator’s hard drive.

Step 1: Follow the instructions outlined in “Using the File Duplicator Utility” on page 71. Once you have established a connection between the computer and the duplicator, you should be able to open the hard drive on the duplicator in a window on your PC:



Step 2: The duplicator’s hard drive contains the following folders:

- **“dup”** –This is the folder where you can drop your pre-generated ISO CD/DVD image files into.
- **“label”** –This is the folder where you can drop your pre- generated LSI LightScribe label file into.
- **“system”** -This is the folder where the duplicator stores system related information. It is not meant to be modified/deleted in anyway.



Please double-click the corresponding folder (depending on what type of file (ISO or LSI) you wish to drag and drop) to open it.

Step 3: “Drag” the pre-generated ISO CD/DVD image file(s) or pre-generated LSI LightScribe label file(s) from the source folder on your computer and “Drop” it into the corresponding folder on the duplicator’s hard drive.

Step 4: Once the transfer process is complete, please disconnect the USB connection by using the “Unplug or Eject Hardware” icon to safely remove it from your computer.



Step 5: Now you can go to the Duplicator’s Setup menu,

Step 6: Navigate to “USB Connection” submenu by pressing the UP or DOWN arrow button.

Step 7: Press the >> button to enter the Auto Start setting and you shall see a screen similar to the right:

Step 8: Use the up or down arrow button to change the setting to “Off”.

Step 9: Press the >> button to submit the change. Once completed, the duplicator will restart automatically or you will be asked to restart the duplicator.



Select the Duplication Speed

This process will allow you to adjust the duplication speed subject to your needs.

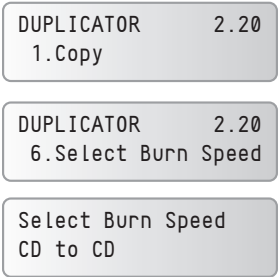
By default, the duplication speed will be set to the optimal speed for each format and setting. However, under some circumstances, you may want to reduce the duplication speed. Those circumstances typically are as follows:

- **Poor Blank Media Quality.** When your blank media quality is not good, lowering the duplication speed is necessary to make good copies.
- **Poor Master Disc Quality.** If your master disc condition is not good, lowering the duplication speed will greatly reduce the failure rates.
- **Duplication Quality.** Overall, the lower the speed, the higher the quality of your duplicates. If you have time, it is a good choice to lower the speed to produce the best quality duplicates.

When you turn on your duplicator, after it has booted up, you should see the following signifying your duplicator is ready.

Step 1: Use the up or down arrow button to navigate to the Select Burn Speed menu.

Step 2: Press the >>button to enter the Select Burn Speed menu and you shall see a screen similar to below:



Step 3: Select the Correct Speed Type

There are different types of recording speed based on the disc format and source:

- **HDD/CD to CD:** Copying to CD-R/RW media from a pre-loaded CD partition/image in the hard drive or a CD master disc in the Reader/Writer.
- **HDD/DVD to DVD:** Copying to DVD±R media from a pre-loaded DVD partition/image in the hard drive or a DVD master disc in the Reader/Writer.
- **HDD/DVD-DL to DVD-DL:** Copying to Double/Dual Layer Recordable DVD media from pre-loaded a DVD-DL partition/image in the hard drive or a Double/Dual Layer DVD master disc in the Reader/Writer.

Depending on the type of duplication job(s) and your duplicator restrictions, you need to select the correct speed type in order for this setting to take effect. To select various speed types, you need to press the up or down button to adjust and press the >> button to submit your selection.

Step 4: Once you have submitted the desired speed types, you should see the following screen for speed adjustment.

You can press the up or down button to select the desired speed value and then press the >> to submit the selection.

CD to CD Speed:
16x



If the speed value you've selected is the same as the current speed value, the duplicator will NOT respond to the >> button. Please press the << button to go back to the main menu.

Step 5: Once the speed setting has been successfully changed, you shall see the following screen for 2 seconds.

Then you will be directed back to the main menu:

CD to CD Speed: Adjusted to: 24x	
DUPLICATOR	2.20
1. Copy	

Mix Audio Tracks

This process will guide you to mix an Audio CD from various tracks among different Audio CDs.

The following are the ways you can mix an Audio CD:

- **Mix directly to Blank CD-R media**
(This option is not available if you have a CD+G Duplication Duplicator):
By mixing an audio CD directly to blank CD-R media, all the tracks you selected will be transferred to the blank CD-R media directly track by track. Once you've completed your track selection(s); you will be instructed to finalize your mixed Audio CD. You can operate this by choosing "Edit Track to: Blank CD" when asked.
- **Mix through the Hard Drive**
(This option is available ONLY if your duplicator has a hard drive installed.):
By mixing an audio CD through the Hard Drive, all the tracks you select will be transferred to the Hard Drive. Once you've completed your track selection(s); you will be instructed to copy them onto a blank 80 min CD-R media. You can operate this function by choosing "Edit Track to: Hard Drive" when asked.



Please do this cautiously; if any of the Audio CD tracks you wish to mix are not readable due to scratches or poor quality, the blank CD-R media will be ruined.



This is considered a safer method to perform the mix audio tracks. If any of the Audio CD tracks you wish to mix are not readable due to scratches or bad quality, the blank CD-R media will NOT be ruined since the blank CD-R media isn't being recorded on until all Audio CD tracks are successfully transferred to the hard drive.

When you turn on your duplicator, after it has booted up, you should see the following signifying your duplicator is ready.

Step 1: Use the up or down arrow button to navigate to the Mix Audio Tracks menu.

Step 2: Press the >> button to enter the Mix Audio Tracks menu and you shall see the Mix Mode screen similar to below (If your duplicator is a CD+G Duplication Duplicator or does not have a hard drive installed, please skip ahead to Step 3):

At this point, you can press the UP or DOWN arrow to choose how you want to mix your audio tracks, either by mixing through the hard drive or directly to blank CD's. Then press the >>button to submit your selection.

Step 3: Once the Mix Mode selection is submitted, you shall see following Preparation screen and the corresponding trays that do not contain disc(s) in them will automatically be ejected:

DUPLICATOR 2.20
1.Copy

DUPLICATOR 2.20
10.Mix Audio Tracks

Mix Mode:
Directly to Blank CD

Preparing
Waiting for Master

OR

Preparing
Waiting for a Blank



Note

If either one of the above screens is displayed for more than 2 minutes after you have placed your master disc or blank disc into the drives, please check the disc quality.

Step 4: After you've placed an Audio CD containing the track(s) you wish to copy, and a blank CD-R media in the writer drive(s), please allow 5-10 seconds for the duplicator to detect them. After they have been recognized, then you should see the following screen:

- "Total: 0 Trk 0m: 0s" indicates that you have zero track(s) selected and it has zero minutes and zero seconds playtime.
- "Track 1: 4m:31s" indicates currently you are focusing on track one of the Audio CD you've inserted and has a running time of four minute and thirty-one seconds.

Step 5: When you see the above screen shot, you can press the up or down button to display the playtime of each track on this audio CD and press the >>button to select the track you wish to be mixed. Once a track is selected, you shall see the symbol "*" on the left of the track number on the 2nd line as shown in the below screen.

You need to press the >>button to return to the track selection menu. The track selected that caused this error message will be de-selected automatically. Then, you can select a different track with smaller playtime.

Total: 0 Trk 0m: 0s
Track 1: 4m:31s

Total: 1 Trk 4m:31s
*Track 1: 4m:31s



Note

If the track you have selected will cause the total playtime of all audio tracks to be more than your blank CD-R media capacity, you should see the following screen.

Over Blank Disc Capacity
Press OK to Continue



Note

Given the limited space of the screen, the message above will scroll across the screen in order to show the full message.

Step 6: Once you have finished selecting the tracks on this Audio CD you want to mix, you can press the up or down button until you see “Are you done?” on the 2nd line as in the following screen.

Total: 6 Trk 26m:17s
Are you done?

Step 7: You can now press >> button to confirm your selection. The duplicator will now start the mixing process as shown in the following screen.

Mixing... 1
10% 4m:31s

- “1” indicates that the system is currently transferring track one.
- “10%” indicates that the current transferring progress of the current track, track one.
- “4m:31s” indicates the current running time of that track.

Step 8: Once the mixing process is completed, you will see the following screen:

Mixing Complete!
Finish Mixing?

When you’re finished adding tracks, you can choose to finalize the job (mark the completion) by performing the following steps:

- Press the >>>button when you see “Finish Mixing?” on the 2nd line of the screen like below.
- Then press the >>>button to submit, and you should see the following confirmation screen:
- Press the >> button once to confirm your selection, and you should see the following Finalizing screen (if you choose to mix directly to a blank CD) or Copying screen (if you choose to mix through the hard drive).

Mixing Complete!
Finish Mixing?

Mixing Complete!
Confirm to Finalize?

Finalizing...
Please Wait

OR

Copying... H 228MB
0/1 10% 401MB

- d Once the finalizing/copying process is completed, you should see the following screen.

"1" indicates that the system is currently transferring track one.

Job Completed!
Press OK to Finish

Or you can choose to mix more tracks from other Audio CD's by pressing the up or down button until you see "Insert Next Master?" on the 2nd line as in the following screen.

Mixing Complete!
Insert Next Master?

- Then press the >> button to repeat Steps 3 through 8.

When the whole process is complete, your mixed copy will be ejected and you shall see the following:

Job Completed!
Press OK to Finish

- Press >> button and you will be directed back to the main menu:

DUPLICATOR 2.20
10.Mix Audio Tracks

Example of Mixing Audio Tracks directly to Blank CD

For the example below, we will mix a new Audio CD from 2 different Audio CD's.

- From CD1: song 2, and song 4
- From CD2: song 3, song 4 and song 5

- 1 Go to menu 10. Mix Audio Tracks.

DUPLICATOR 2.20
10.Mix Audio Tracks

- 2 Press >> button.

Mix Mode:
Directly to Blank CD

- 3 Press >> button.

Preparing
Waiting for a Blank

- 4 Insert Blank CD-R media.
- 5 Insert CD1.
- 6 Press the down button until you see "Track 2" on the 2nd line.
- 7 Press >> button once.
- 8 Press the down button until you see "Track 4" on the 2nd line.
- 9 Press >> button once.
- 10 Press down button until you see "Are you done?" on the 2nd line.
- 11 Press >> button once
- 12 Press down button until you see "Insert Next Master?" on the 2nd line.
- 13 Press >> button once.
- 14 Insert CD2.
- 15 Press down button until you see "Track 3" on the 2nd line.

Preparing
Waiting for Master

Total: 0 Trk 0m:00s
Track 1: 4m:31s

Total: 0 Trk 0m:00s
Track 2: 4m:49s

Total: 1 Trk 4m:49s
*Track 2: 4m:49s

Total: 1 Trk 4m:49s
Track 4: 4m:58s

Total: 2 Trk 9m:47s
*Track 4: 4m:49s

Total: 2 Trk 9m:47s
Are you done?

Mixing... 2
0% 4m:31s

Mixing Complete!
Finish Mixing?

Insert Next Master?

Preparing
Waiting for Master

Total: 2 Trk 9m:47s
Track 1: 4m:03s

Total: 2 Trk 9m:47s
Track 3: 4m:47s

16 Press >> button once.

Total: 3 Trk 14m:34s
*Track 3: 4m:47s

17 Press down button until you see "Track 4" on the 2nd line.

Total: 3 Trk 14m:34s
Track 4: 5m:26s

18 Press >> button once.

Total: 4 Trk 20m:00s
*Track 4: 5m:26s

19 Press down button until you see "Track 5" on the 2nd line.

Total: 4 Trk 20m:00s
Track 5: 4m:27s

20 Press >> button once.

Total: 5 Trk 24m:27s
*Track 5: 4m:27s

21 Press down button until you see "Are you done?" on the 2nd line.

Total: 5 Trk 24m:27s
Are you done?

22 Press >> button once.

Mixing... 3
0% 4m:47s

Mixing Complete!
Finish Mixing?

23 Press >> button once.

Mixing Complete!
Confirm to Finalize?

24 Press >> button once.

Finalizing...
Please Wait

Job Completed!
Press OK to Finish

25 Press >> button once.

DUPLICATOR 2.20
10.Mix Audio Tracks

Change the Setup settings

Most of the internal settings and information is stored inside the Setup menu. To explore and modify them is simple. Below is an example how to modify the “Auto Start” setting. Please note that the default setup is set for optimal performance of the duplicator, it is unnecessary to change if you are satisfied with the outcome.

When you turn on your duplicator, after it has booted up, you should see the following signifying your duplicator is ready.

Step 1: Use the up or down arrow button to navigate to the Setup menu.

Step 2: Press the >> button to enter the Setup menu and you shall see a screen similar to below:

Step 3: Use the up or down arrow button to navigate to the Auto Start setting.

Step 4: Press the >> button to enter the Auto Start setting and you shall see a screen similar to below:

Step 5: Use the up or down arrow button to change the value to “Full”.

Step 6: Press the >> button to submit the change. Once completed, you will be guided back to the setting menu.

Step 7: Press << button to go back to the main menu.

DUPLICATOR2.20
1.Copy

DUPLICATOR2.20
11.Setup

Setup
1.Language

Setup
2.Auto Start

Auto Start
Auto

Auto Start
Full

Setup
2.Auto Start

DUPLICATOR2.20
11.Setup



This change will only be effective for the current usage until you power off the duplicator unless you perform the Save function under the Utilities menu, or perform the Shutdown function under the main menu.

Chapter 4:

Menu Overview

1 Copy

This menu will guide you to make CD/DVD copies. For more information, please refer to “Make Disc-to-Disc Copies” on page 20 or “Make Hard Drive-to-Disc Copies (ONLY for duplicators that have a hard drive installed) on page 26.

2 Print

This menu will guide you to design and print a label from your LightScribe Standalone Duplication duplicator.

3 Copy + Print

This function allows the user to perform the disc duplication operation then the disc labeling operation as part of one process. The user merely needs to flip the disc from the data side to the label side after each duplication pass.

To use this function, the master disc partition/image and LightScribe Duplication Label file (.lsi file) are required to be preloaded onto the duplicator’s internal hard drive. For more information, please refer to “Load Partition” under “Hard Drive Setup” on page 27, and “Load Label” under “Print Setup” on page 43.

4 Test

This menu will guide you to make a simulation of the copying process. During this simulation process, all write once recordable discs such as (DVD-R, CD-R) will be reusable. The purpose of performing such simulation is to ensure error free duplication.

5 Compare

This menu will guide you to perform a bit-by-bit comparison between your master disc (or master disc image on the hard drive) and all the copied discs. The reason to perform this compare operation is to ensure all of your copies identically compare to the master disc.

6 Test + Copy

This menu will guide you to perform the simulation of copying process and if everything passes during the simulation, the real copying process will be performed. If there's an error encountered during the simulation, an error message will be displayed and the copying process will not be initiated.

7 Copy + Compare

This menu will guide you to make copies, after which, it will perform an additional comparison process automatically to ensure data correctness.

8 Select Burn Speed

This menu will guide you to adjust the duplication speed on various duplication job types. For more information, please refer to "Select the Duplication Speed" on page 45.



Warning

Due to the physical limitation of DVD+R/RW & BD-R/RE recordable format, you can not perform this procedure on these formats. If you do so, you will encounter a failure messages.



Warning

If you are using CD-RW/DVD-RW discs as your blank media during the simulation, any content that may have been recorded inside those discs will be permanently erased.

9 Select Source

This menu will guide you to select a Reader/Writer drive as the source drive (where your master disc will be placed into) for Copy related operations. For more information, please refer to section 1 of “Make Disc-to-Disc Copies” - “Selecting the Copy Source” on page 20.

10 Erase

This menu will guide you to erase your rewriteable discs in the Writer Tray. There are two options to erase your rewriteable discs:

Full Erase: It will erase the entire disc which will make it impossible to be recovered.

Quick Erase: It will erase the index of the rewritable disc, not the data section.

11 Hard Drive Setup

11.1 Select Partition

This function will guide you to choose the default partition/image.

11.2 Load Partition

This function will guide you to load your master disc content into the hard drive as a partition/image. For more information, please refer to section 1 of “Make Hard Drive-to-Disc Copies” - “Loading Master Disc content into the Hard Drive as a partition/image” on page 26.

11.3 Rename Partition

This function will guide you to rename an existing partition/image (including Reserve partition/image) in the hard drive.

11.4 Delete Partition

This function will guide you to delete or remove an existing partition/image (including Reserve partition/image) in the hard drive.

11.5 Partition Info

This function will display additional information of all existing partitions/images in the hard drive. Such information includes partition/image disc type, capacity, etc.

11.6 Select Loading Drive

This function will guide you to select a Reader/Writer drive as the source drive (where your master disc will be placed into) for partition/image loading/creating related operations.

11.7 Format Hard Drive

This function will guide you to re-format the entire hard drive of the duplicator. During the formatting process, all of your hard drive contents will be permanently lost. Please use this function with caution.

12 Print Setup

12.1 Load Label

This function allows you to load your LightScribe Duplicator Label file (.lsi file) from the Label Disc onto the duplicator's internal hard drive.

For instructions on how to generate the LightScribe Duplicator Label, please refer to "Design and Print Labels" on page 35.

12.2 Rename Label

This function allows you to rename your existing LightScribe Duplicator Label in the duplicator's hard drive.

12.3 Delete Label

This function allows you to delete your existing LightScribe Duplicator Label in the duplicator's hard drive.

12.4 Print Surface Info

This function allows you reveal the ID code of the LightScribe printable media's label surface and the ID code of the LightScribe writer itself for tech support troubleshooting purposes.

12.5 Select Loading Drive

This function will guide you to select a Reader/Writer drive as the source drive (where your LightScribe Label Disc will be placed into) for LightScribe Duplicator Label loading/creating related operations.

13 Mix Audio Tracks

This process will guide you to mix an Audio CD from various tracks among different Audio CDs. For more information, please refer to "Mix Audio Tracks" on page 47.

14 Setup

14.1 Language

This setting will allow you to choose which language you prefer be used to navigate the controller function of this duplicator.

14.2 Auto Start

This setting allows you to choose Auto, Full, or Off. If Auto is selected, this

feature automatically starts the duplication process when all writer drives detect recordable media inside, or waits for 30 seconds before starting the duplication process if there is at least one recordable disc in a writer drive and any of the remaining writer drives are empty. If Full is selected, this feature allows the duplicator to copy automatically once your master disc and all of the writer trays of the duplicator are filled with recordable media, but will not start automatically if any writer drives remain empty. If Off is selected, the copy process requires you to press the >>button to start the duplication. This feature applies to applications inside the operation menu such as COPY, TEST, TEST+COPY, COPY+COMPARE, etc.

14.3 Read Error Skip

Normally, when the duplicator encounters a reading error while reading your master disc, the duplication job will be aborted and all the recordable media will be ruined. However, if you believe that your master disc has a small, insignificant error due to physical damages, you can enable the setting to allow the duplicator to skip any read error* it encounters.

*This function will not fix the error; it will only skip it to make the rest of the data readable.

14.4 CD Writing Mode

This setting will allow you to select which mode you would like to duplicate a CD. There are two different modes, "Disc at

Once” and “Track at Once”. Unless you understand completely what they mean, we strongly suggest you to set it as “Disc at Once”.

14.5 Max Audio, VCD & CDG Speed

Audio CD's and Video CD's do not have internal error checking capability, so duplicating at too high a speed may cause frequent errors. This setting will allow you to adjust the maximum duplication speed for Audio and Video CD.

14.6 Buzzer

This setting will allow you to choose whether you want to hear a beep when you press a button or when a task has been completed.

14.7 Startup Menu

This setting will allow you to choose which menu you would like to see first when you turn on the duplicator.

14.8 Screen Saver

This setting will allow you to choose whether you want to enable the Screen Saver feature or not. By enabling this feature, a screen saver will be displayed when your duplicator has been idle for a long period of time.

14.9 Duplication Mode

There are two duplication modes: Load and Copy and On the Fly. Load and Copy allows faster duplication from the Hard Drive by simultaneously copying onto the blank media in the writer drives while loading the master disc to the hard drive. All subsequent copies will be created from the stored master on the HDD. The On the Fly mode instructs the duplicator

to copy directly from the master disc. When using On the Fly mode, no information is stored on the hard drive.

14.10 Counter

This option will allow you to enable/disable the Counter feature by turning this feature ON or OFF. This feature will notify you how many discs have been copied and how many discs are left to go.

14.11 DVD+R High Compatibility Mode

This feature will allow you to enable/disable the DVD+R High Compatibility Mode feature by turning this feature ON or OFF. The purpose of this feature is to increase the compatibility of DVD+R media with a broader range of DVD Video players. This process will increase the amount of time required to duplicate your disc(s).

14.12 ISRC

This option will allow you to enable/disable copying the ISRC code of the Audio CD. ISRC is the serial# of the audio tracks that uniquely identifies the song in that audio track. This ISRC code is commonly found in commercial Audio CD's and rarely seen on home made Audio CDs. By enabling this feature, the duplication performance will be lowered.

14.13 Disable Drives

This feature allows you to disable certain drives/trays when those drives/trays are producing high failure rates or not functioning properly.

14.14 CD Overburn

Overburning is the process of recording data past the normal size limit. Many disc manufacturers extend a recordable disc to leave a small margin of extra groove at the outer edge. This feature allows you to turn the ability to use the overburn area ON or OFF.

14.15 USB Connection

This feature will allow you to turn on/off the USB port on the back of your duplicator. This option will allow the duplicator's hard drive to be controlled by your computer via the USB port on the back of the duplicator.

*Please note that duplicator needs to be restarted when this setting is changed.

15 Utility

15.1 Disc Info

If you are uncertain about the type of blank recordable media you are using, the duplicator is equipped with the disc info function to help identify and notify you of the disc information encoded within.

This feature will identify your blank recordable media's format, capacity, manufacture ID as well as the media's certified writing speed. Please note that limited information will be displayed for media in the Reader drive.

15.2 Prescan

Approximately 50 % of failures reported by our duplicator are caused by errors in the master disc which our Reader couldn't overcome. When this kind of failure occurs, it tends to waste all of

your blank recordable media.

To help detect flaws in the master disc prior to performing the duplication process, we introduce the “Prescan” feature. This feature will scan and detect any bad sectors existing in the master disc. It is recommended to perform this feature before starting the duplication task for all master discs. By doing so you can prevent wasting blank media due to an error in the master disc.

15.3 Duplicator Info

By entering this menu, you will be able to see the hardware and software information pertaining to your duplicator.

15.4 Device Info

By entering this menu, you will be able to see the information for devices built inside your duplicator, such as the drives. That information includes but not limited to manufacture, model number, etc.

15.5 Load Default

This function will reset all of the options back to manufacture’s default. You can perform this function if your duplicator is acting abnormal. You’ll need to perform “Shutdown” and restart the duplicator in order for this to take affect.

15.6 Update Firmware

This function will update the software for your duplicator. To update, you need to insert a manufacture Certified Update CD into the Reader and select this function by pressing the >>button. We strongly suggest you do not upgrade your duplicator’s firmware unless your duplicator is getting unstable.

15.7 Save

This function will save all the settings you've modified since the last time the duplicator was booted.

16 Account Management

This menu will allow the Administrator to perform the following user administrative tasks. This feature is disabled by default. Prior to activating this feature, the duplicator recognizes all users as the only activated user defined as the administrator. The pre-defined password for this menu is "0000".

16.1 View User

This menu allows you to view current existing user accounts.

16.2 Create User

This menu allows you to create additional user accounts. Each user has their own settings. During this process, you will be prompted to enter a new user name (up to 8 alphanumeric letters or numbers) and user password (consists of a 4 digit number) for a new account.

16.3 Edit User Info

This menu allows you to change the existing user account's name and password. During this process, you will be asked to select the existing account and then you will be prompted to enter the new user name and new user password for this account.



Note

User "Admin" is the administrative account, you can NOT change the user name for this account, but you will be able to change the password for this account.

16.4 Delete User

This menu allows you to delete the existing user account. During this process, you will be asked to select the existing account to be removed.

16.5 Password on Bootup

This menu allows you to enable/disable the user administrative feature prompt; user login upon boot up. During this process, you will be asked to select "ON" or "OFF" (enable/disable).

17 AutoCopy

This function will allow the duplicator to operate the disc-to-disc copy function without any user inputs for ease of operation.

18 Shutdown

This function saves any duplicator settings that you have entered and makes sure it is safe to turn off your duplicator. Once you see the Ready to Power OFF message, then you can safely turn off the machine via the Power Switch. Turning off your duplicator without performing this function will increase the risk of damaging your duplicator.



Note

User "Admin" is the administrative account; you can NOT delete this account.

Appendix A - LightScribe Software Setup Instructions

Minimum Hardware Requirements	Minimum Software Requirements
<ul style="list-style-type: none">• Pentium 3 Class microprocessor or better• CD/RW Recorder• 32Mbytes of RAM• 10Mbytes of free disc space on your hard drive	<ul style="list-style-type: none">• Windows 2000, XP, 2003 or Vista

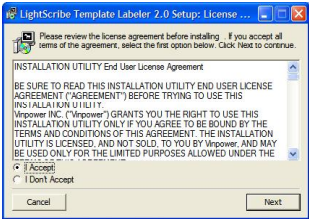
Software Installation

Step 1: Insert the LightScribe Installation Disc into the CD drive of your computer.

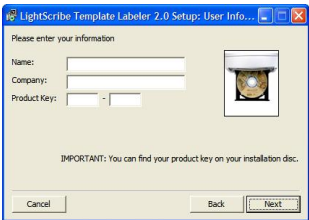
Step 2: Using the “My Computer” icon or Windows Explorer, click on the CD drive.

Step 3: From the CD Drive, double-click the setup.exe to run the setup program.

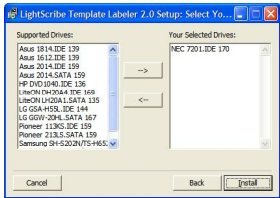
Step 4: Follow the Installation Wizard to start the installation process, see screen to the right:



Step 5: During the installation process, you will be prompted for a Product Key. The product key can be found on the Installation Disc.

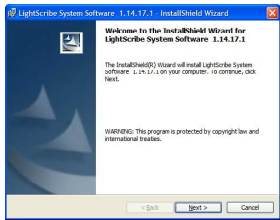


Step 6: You will then be asked to choose the LightScribe writer model that was installed in your duplicator. The default writer that comes with your duplicator should be pre-selected. You can then click Install to continue the installation process.

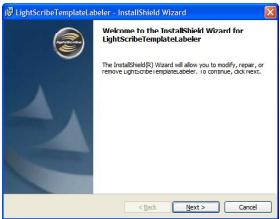


Step 7: During the installation process, the following applications will be installed:

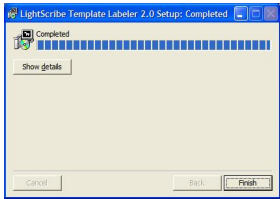
LightScribe Duplicator Software



Template Labeler



Step 8: Upon successful installation of the above software, click the Finish button to complete the installation.



Appendix B: Software Installation Guide for Accessing the Hard Drive on a Computer

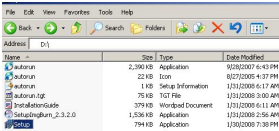
Minimum Hardware Requirements	Minimum Software Requirements
<ul style="list-style-type: none">• Pentium 3 Class microprocessor or better• USB 2.0 Type B Port• 32Mbytes of RAM• 10Mbytes of free disc space on your hard drive	<ul style="list-style-type: none">• Windows 2000, XP, 2003 or Vista

Installing File Duplicator Driver & Utility:

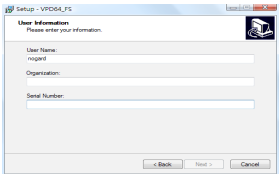
Step 1: Insert the Installation CD.

Step 2: Using the “My Computer” icon or Windows Explorer, click on the CD drive

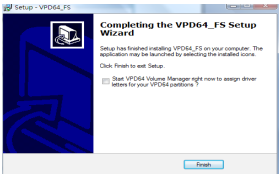
Step 3: Double-click Setup.exe Icon.



Step 4: Follow Installation Wizard to complete the installation process.



Step 5: Restart your computer.



Using the File Duplicator Utility:

When using for the first time:

Step 1: Power On the Duplicator & your PC

Step 2: Turn On the “External USB Connection” setting under “Setup” on the Duplicator

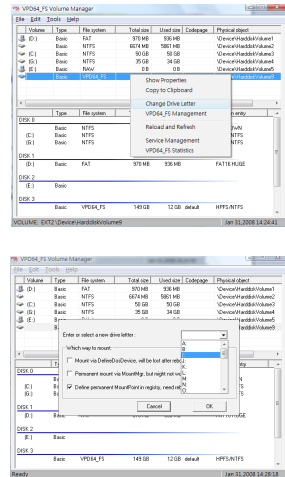
Setup
USB Connection

USB Connection
On

Step 3: Restart the Duplicator when prompted.

Step 4: Use a USB 2.0 Cable to connect the Duplicator to your PC.

Step 5: The File Duplicator Utility on your PC should recognize a new Drive Partition



Step 6: Mount the Drive Partition to one of the free Drive Letters.

Step 7: Your PC should now have a drive partition ready to access.



Using the File Duplicator Utility:

When using the duplicator again after completing the above steps on the same PC:

Step 1: Power On the Duplicator & your PC

Step 2: Go to the Duplicator's Setup menu pressing the UP or DOWN arrow button, then press the >> button to enter the menu.

Step 3: Navigate to "USB Connection" submenu by pressing the UP or DOWN arrow button.

Step 4: Press the >> button to enter the Auto Start setting and you shall see a screen similar to the right:

Step 5: Use the up or down arrow button to change the value to "On".

Step 6: Press the >> button to submit the change. Once completed, the duplicator will restart automatically or you will be asked to restart the duplicator.

Step 7: Use a USB 2.0 Cable to connect the Duplicator to your PC.

Step 8: Your PC should now have a drive partition ready to access.

XEROX 2.20
14. Setup

Setup
15. USB Connection

USB Connection
Off

USB Connection
On

Computer Information		
Hard Disk Drives		
Hard Disk Drives (C:)	Local Disk:	19.9 GB
Hard Disk Drives (D:)	Local Disk:	278 GB
Devices with Removable Storage		
3 1/2 Floppy (A:)	5 1/4-inch Floppy Disk:	
DVD-RAM Drive (E:)	CD Drive	

Appendix C: Creating an ISO DVD/CD Image file:

To install a free ISO DVD/CD Image File Creation Utility, such as ImgBurn (go to <http://www.imgburn.com> for more information)

Step 1: Insert the Installation CD.

Step 2: Using “My Computer” icon or Windows Explorer, click on the CD drive

Step 3: Go to the “Tools” Folder

Step 4: Double-click on the executable file icon that starts with ImgBurn.

Step 5: Follow Installation Wizard to complete the installation process.

Creating an ISO DVD/CD Image File from a CD/DVD disc to the Duplicator’s hard drive by ImgBurn:

Step 1: Double-click ImgBurn Icon on your desktop or Click on “Start” -> “Program Files” -> “ImgBurn” -> “ImgBurn”

Step 2: Click on “Mode” on the menu bar

Step 3: Select “Read”

Step 4: Select your DVD/CD drive that has the disc you want to create the ISO image file from by clicking on the drop down box under “Source”

Step 5: Set your Destination to “I:\DUP” by clicking on the button under “Destination”. (“I” represents the drive letter that you assigned for the Duplicator’s hard drive partition.)

Step 6: Click on the Read Button at the bottom to perform the ISO completion process.

You can visit <http://www.imgburn.com/index.php?act=screenshots> for screenshots or other functionality of this software. Contact the Xerox Duplicator Support Center at 1-800-571-9767 for any questions you may have.

Appendix D: Troubleshooting

Frequently Asked Questions

- 1 No display on the LCD or the unit does not operate when the power is on.**

Check the power cable connection and that the environment for the power outlet is normal.

Make sure the required power voltage for the duplicator matches the voltage of your power outlet.

If the duplicator was stored in a location where the temperature dropped below 32°F (0°C) within the past 24 hours, leave the duplicator in a warm room with temperatures at least 65°F (19°C) for 4 hours prior to powering it on.

- 2 The duplicator can not recognize the master disc.**

Check the format of the master disc or the master itself for damage.

Your master disc may be copy protected. Normally, most of the DVD/Blu-ray Discs and some of the CDs you have purchased from stores are copy-protected.

Use one of the Writers to read your master disc by selecting one of the writers as

the Copy source (please refer to section 1 of Make Disc-to-Disc Copies” - “Selecting the Copy Source” on page 20.) If it works, make a copy of your master disc and treat the copy as the new master. Then set the Copy source back to the Reader and try again.

3 Buttons do not function.

Maybe it is still busy on a task. Give it some time and press it again. If it still doesn't work, turn off the machine, and then restart the machine after a minute.

4 Copy completed but the copies are not readable / executable?

Use “compare” feature to check the copied disc.

Based on our experience, the quality of your media plays a big role on this part. Try to use high quality media to prevent such problems.

Please use another BD/DVD/CD player/ROM to test the copied media. Sometimes, your BD/DVD/CD Player/ROM may not be compatible with recordable BD/DVD/CD disc.

5 The failure rate is high.

Lower the “write speed” and try again.

Quality of blank disc may be poor.

Quality of your master disc may be poor.

6 Do I need to upgrade my duplicator's firmware?

Unless your duplicator is getting unstable, we strongly suggest not upgrading your duplicator's firmware. Please contact our Tech Support if your duplicator is getting unstable.

7 Cannot boot-up or fails to upgrade firmware.

Contact our Tech Support.

8 Can I load data directly from my computer to my duplicator's Hard Drive?

No, your duplicator's Hard Drive has a unique file duplicator that computers will not recognize. Thus, you can't perform any read/write operations to the Hard Drive from your computer.

9 Why some writers won't copy?

Reset back to default. (Troubleshoot #10)

Contact our tech support

10 Why do I get “Label Not Found” error message?

Please verify that the label file does not contain any symbols or foreign characters.

Please verify that the label file has “.lsi” extension, like “abc.lsi”

Please verify that the label file is located under the root of your data CD.

Please verify that the Label CD wasn’t created under Roxio’s Drag to Disc, Nero’s InCD or Windows XP or Vista’s build-in burning software.

Please verify that the correct writer was selected during the software installation.

11 How do I reset my duplicator back to default?

a Go to menu 15. Utilities.

DUPLICATOR 2.20
15.Utilities

b Press the >>button.

Utilities
1.Disc Info

c Press down button until you see “Load Default” on the 2nd line

Utilities
5.Load Default

d Press >>button.

Load Default
Press OK to Continue

e Wait for 3-4 seconds.

Utilities
5.Load Default

f Press << button.

DUPLICATOR 2.20
15.Utilities

g Press down button until you see
"Shutdown" on the 2nd line.

DUPLICATOR 2.20
18.Shutdown

h Press >>button.

Shutdown
Press OK to Shutdown

i Press >>button.

System Checking OK!
Ready to Power Off

j Power off the duplicator and power
it back on. All settings should be
restored back to default.

Error Codes

Typically the duplicator will show an error message and error code if a problem occurs. Please reference the below diagram for a description of the error codes and the recommend solution:

Error Code	Error Message	Description & Recommended Solutions
200	Source Disc Empty	<p>Description: The intended master disc is detected and identified successfully, but it is a blank disc.</p> <p>Possible Solution: Please double check the master disc to ensure it contains data.</p>
201	Bad Master	<p>Description: The master disc is detected but can not be identified within 3 minutes.</p> <p>Possible Solution: Please check the master disc quality for defects or errors.</p>
202	No Targets!	<p>Description: The blank disc(s) are missing when the job has already started.</p> <p>Possible Solution: Please make sure blank discs are placed in writer trays.</p>
203	Burner Mixed or Firmware version Mixed	<p>Description: The model or firmware version of all writers in the duplicator is not the same.</p> <p>Possible Solution: This typically happens when you recently replaced a writer drive. Contact Tech Support.</p>

Error Code	Error Message	Description & Recommended Solutions
204	Targets & Master Not Compatible!	<p>Description: The master disc and targets (blanks) do not have same format.</p> <p>Possible Solution: Please go to “Disc Info” in “Utilities” to make sure the master disc and the blank discs are the same format, (for example, using a CD Master and CD blank discs).</p>
205	Targets Not Blank!	<p>Description: The target (blank) discs are detected and identified as neither RW discs nor blank discs.</p> <p>Possible Solution: Please go to “Disc Info” in “Utilities” to make sure the intended blank discs are empty.</p>
206	Targets & Master Size Mismatch!	<p>Description: When the error code occurs during the Compare process, the size of the master disc and the successfully copied disc(s) is different. When the error code occurs during a Copy related process, the capacity of the blank disc(s) is less than the data size of the master disc.</p> <p>Possible Solution: When the error code occurs during the Compare process, contact Tech Support. When the error code occurs during a Copy related process, please go to “Disc Info” in “Utilities” to make sure the blank disc’s capacity is large enough to fit the data size of the master disc.</p>
207	Targets M Code Mixed!	<p>Description: The blank discs contain different manufacture codes.</p> <p>Possible Solution: Please go to “Disc Info” in “Utilities” to make sure every blank disc has the same media ID (M-Code). Replace the one(s) that are different if necessary.</p>

Error Code	Error Message	Description & Recommended Solutions
208	Targets are not RW discs!	<p>Description: The target(blank) discs are not Rewritable discs</p> <p>Possible Solution: Please go to “Disc Info” in “Utilities” to make sure every blank disc is a rewriteable disc.</p>
209	Master Disc is CSS Protected!	<p>Description: The master disc is copy-protected.</p> <p>Possible Solution: This master disc contains copy-protection. Please try a different master disc without any copy-protection.</p>
210	Bad Discs!	<p>Description: The target (blank) disc(s) are detected but can not be identified.</p> <p>Possible Solution: Please double check the blank disc(s) quality.</p>
211	This format can not be tested!	<p>Description: The target (blank) disc(s) is DVD+R, DVD+RW, DVD+R DL, BD-R or BD-RE.</p> <p>Possible Solution: Above disc formats are not supported by the Test function. Please use DVD-R/RW or CD-R/RW discs if this function.</p>
212	DVD is not supported!	<p>Description: Your duplicator does not support the DVD format.</p> <p>Possible Solution: Please purchase a duplicator that supports DVD.</p>
213	DVD-RAM is not supported!	<p>Description: Your duplicator does not support the DVD-RAM format.</p> <p>Possible Solution: Please purchase a duplicator that supports DVD-RAM.</p>

Error Code	Error Message	Description & Recommended Solutions
214	Blu-ray is not supported!	<p>Description: Your duplicator does not support the Blu-ray format.</p> <p>Possible Solution: Please purchase a duplicator that supports Blu-ray.</p>
230	Not enough HDD space	<p>Description: The empty space in the hard drive is less than the size of the master disc.</p> <p>Possible Solution: Please free up hard drive space by deleting unnecessary partitions/images.</p>
231	Redundant Name	<p>Description: The name entered has already been used in the duplicator.</p> <p>Possible Solution: Please enter a different name, or rename the existing file name which is in conflict before you re-enter this name.</p>
232	Format Failed!	<p>Description: The duplicator is not able to format the hard drive. A detailed error code will be displayed at the end of the error message in the following format Example: Format Failed (Error:232) (XX-YY), XX: The index of the hard drive which generated the error YY: The error code</p> <p>Possible Solution: Possible Hard Drive defect; please contact Tech Support.</p>
233	Hard Drive Corrupted	<p>Description: The hard drive's information is corrupted.</p> <p>Possible Solution: Please re-format the hard drive.</p>
235	Hard Drive Access Error	<p>Description: There's an error when accessing the hard drive.</p> <p>Possible Solution: Possible Hard Drive defect; please contact Tech Support.</p>

Error Code	Error Message	Description & Recommended Solutions
240	Wrong Password!	<p>Description: The password entered is not correct</p> <p>Possible Solution: Please confirm you typed in the correct password or try a different password.</p>
241	Login Failed	<p>Description: An incorrect password was entered 3 times consecutively</p> <p>Possible Solution: Wait for 5 minutes, then try to use the correct password for next the attempt. If the problem persists, call Tech Support.</p>
250	Source Cannot Be HDD	<p>Description: The source is configured in the hard drive when trying to perform the Mix Audio Tracks function.</p> <p>Possible Solution: Change the Copy source to the Reader.</p>
251	Copy Audio Error	<p>Description: An error occurred during the mixing process of your audio CD.</p> <p>Possible Solution: Try a different master or blank disc.</p>
252	Not Audio CD	<p>Description: The Master Disc is not an Audio CD when preparing the mixing process.</p> <p>Possible Solution: Please verify your master disc is an Audio CD.</p>
253	Over Blank Disc Capacity	<p>Description: The total size of the selected tracks is larger than the capacity of the target blank disc during the track selection process.</p> <p>Possible Solution: Try to select an alternative track with a smaller capacity.</p>

Error Code	Error Message	Description & Recommended Solutions
260	No Update File	<p>Description: The duplicator can NOT locate the Firmware Update File during the Update Firmware process.</p> <p>Possible Solution:</p> <ol style="list-style-type: none"> 1. Confirm the file is not a “zip” file. If it is, please extract it before you burn it into a CD. 2. Confirm the update file is written as “Mode 1” Data CD. Usually a Data CD created with Windows XP or Roxio’s Drag-to-Disc is not in this format. Please use a software like Nero Burning ROM. 3. Make sure there are no other discs in the duplicator and try to insert the update disc into another tray to perform the operation.
261	Wrong update File	<p>Description: The Firmware Update File is not compatible with your duplicator or the Firmware Update File is corrupted.</p> <p>Possible Solution:</p> <ol style="list-style-type: none"> 1. Try to re-download the Firmware Update File.
262	Unknown flash model	<p>Description: The Firmware Update File is not meant for your duplicator.</p> <p>Possible Solution:</p> <ol style="list-style-type: none"> 1. Try to contact Tech Support for the proper Update file.
263	User Abort	<p>Description: A job is being aborted by user pressing the ESC/Escape button for more than 5 seconds during a job run.</p> <p>Possible Solution: Restart the job when ready with the proper master disc & blank discs.</p>

For more information, call
1-800-571-9767 or visit us at
www.xeroxduplicators.com



Xerox® is a trademark of Xerox Corporation in the US and/or other countries and is used under license.