

# Software Installation Guide for Accessing the Hard Drive on a Computer *Network Edition v1.2*

## Minimum Hardware Requirements:

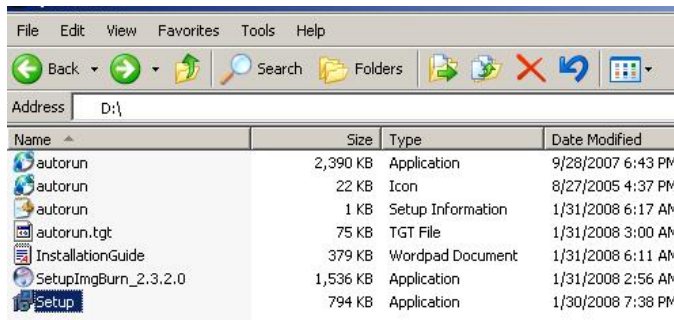
1. Pentium 3 Class microprocessor or better
2. Ethernet 10/100Mbps LAN Port
3. 32Mbytes of RAM
4. 10Mbytes of free disc space on your hard drive

## Minimum Software Requirements:

1. Windows XP, Windows Server 2003, Windows Vista.

## Installing Driver & Utility:

1. Insert the Installation CD.
2. Using the “My Computer” icon or Windows Explorer, click on the CD drive
3. Double-click Setup.exe Icon.



4. Follow Installation Wizard to complete the installation process.  
\* The product key is located on top of the Installation CD.





5. Once your PC has restarted, please double-click the “Duplicator Network Center” icon on your Desktop. You will be prompted on how to proceed by the screen below:



6. Click on the “Next Button” and the drivers should be installed automatically upon completion, where you shall see the screen below then click the “Finish” button to exit the wizard.



## Using the File Duplicator Utility:

When using this feature for the first time:

1. Power On the Duplicator & your PC
2. Turn On the “External Connection” setting under “Setup” on the Duplicator by:

- Go to Menu 11. Setup



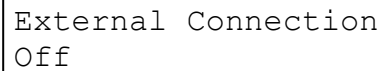
DUPLICATOR 2.30  
11.Setup

- Go to Submenu 14. External Connection



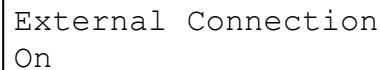
Setup  
14.External Connection

- Press ENT button once.



External Connection  
Off

- Press UP or DOWN button to turn it on.



External Connection  
On

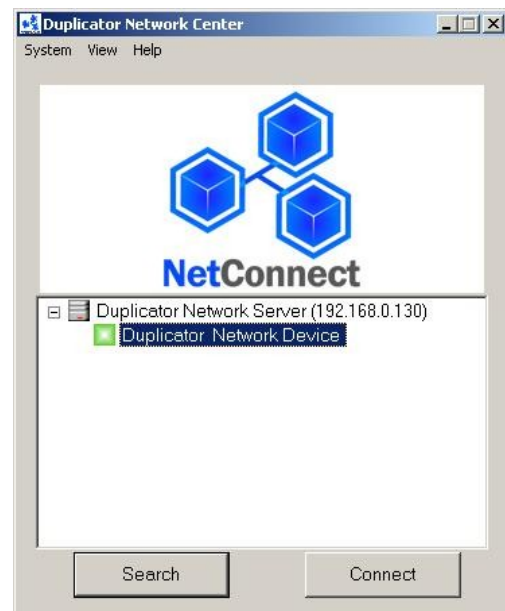
- Press ENT button to submit the change.



Setup  
14.External Connection

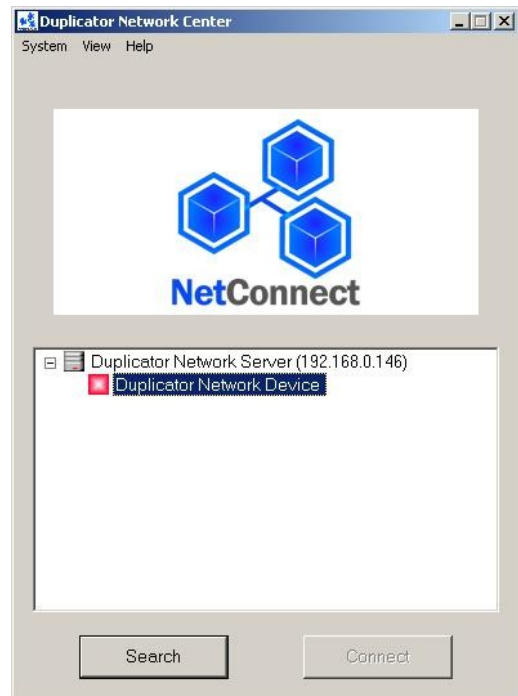
3. The system comes with 2 external connections:
  - a. USB - If you intend to use USB connection, simply connect the PC to the Duplicator’s USB port by USB cable and skip to Step 5.
  - b. Ethernet - If you intend to use Ethernet connection, make sure the USB port is NOT connected and use an Ethernet Network cable to connect the Duplicator to a network switch where resides at same LAN as your PC.
4. Double-click the “DuplicatorNetworkCenter” icon on your Desktop.

- Normally you shall a green icon before “Duplicator Network Device”, see screen to the right. This is an indication that the network device is ready to be connected. Simply press the “Connect” button and proceed to the next step (Step 6).



- If you see a red icon before the “Duplicator Network Device”, see screen to the right. This is an indication that the network device is currently used by another user.

You can request the other user disconnect their connection so you can access to this network device by right clicking the “Duplicator Network Device” and choose “Request Disconnect.” Then wait till the Duplicator Network Device is ready, you shall see a message box that indicates the Duplicator Network device is released. Simply press the “Connect” button and proceed to the next step (Step 6).



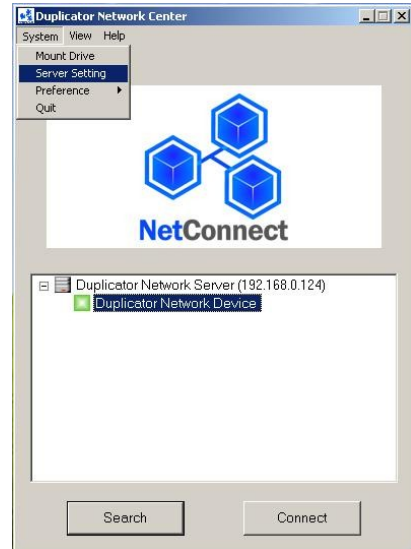
5. Your PC should now have a drive partition ready to access.



## Frequently Asked Questions:

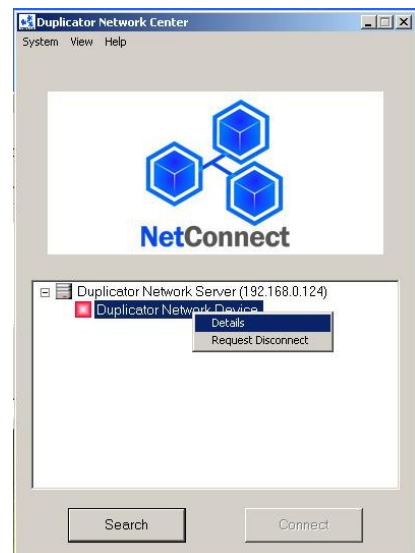
### 1. Why won't the Duplicator Network Center software detect the Duplicator's Network Module (referred to as the Duplicator Network Server)?

*The Duplicator's Network Module (referred to as the Duplicator Network Server) is pre-configured as "DHCP" by default. If it does not fit your local network's configuration, please connect the Duplicator's Network Module under DHCP LAN environment and then adjust the network setting by clicking on the "System" toolbar and choose the "Server Setting".*



### 2. The Duplicator Network Device always has a red icon and I can't connect to it.

*The red icon is an indication that the network device is currently being used by another user. You cannot use it unless the existing user disconnects his/her connection first. You can obtain more details on the current existing connection by right clicking on the "Duplicator Network Device" and choose the "Detail" icon. Then you can choose to request the other user disconnect his/her connection by the Duplicator Network Center or other means of communication.*



### 3. The Duplicator Network Device has a yellow "!" mark on the red icon and I can't connect to it.

*This is an indication that the Ethernet port is being over prioritized by the USB port. Please make sure the USB port is not connected while the Ethernet cable is connected.*

4. I've connected to the Duplicator Network Device successfully, but my PC does not have any drive letter that is associated with the network drive.

*This normally occurs in the Windows 2000 operation system, where the drive letter is not assigned automatically. Please click on the System toolbar and click on the "Mount Drive" option, where a utility will pop up and allows you to assign the drive letter manually.*

