

# Software Installation & Quick Start Usage Guide



## Minimum Hardware Requirements

1. Pentium 3 Class microprocessor or better
2. CD/RW Recorder
3. 32Mbytes of RAM
4. 10Mbytes of free disc space on your hard drive

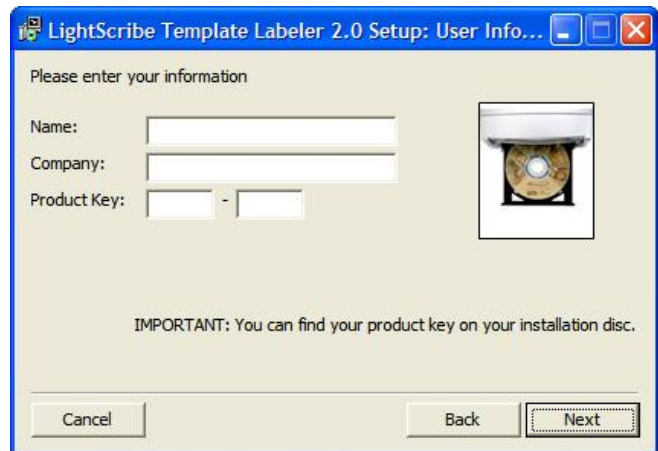
## Minimum Software Requirements

1. Windows 2000, XP, 2003 or Vista.

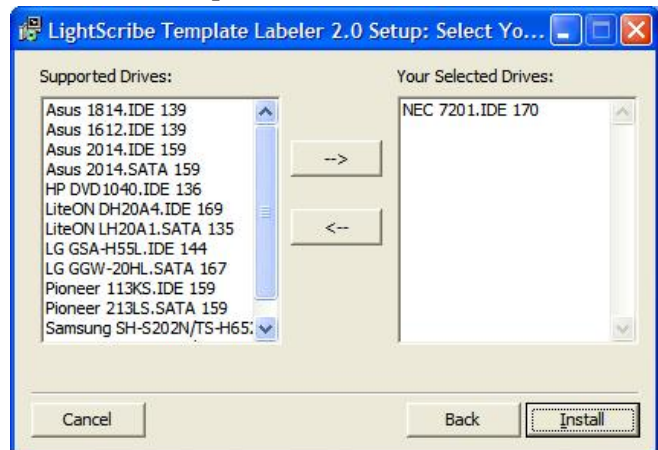
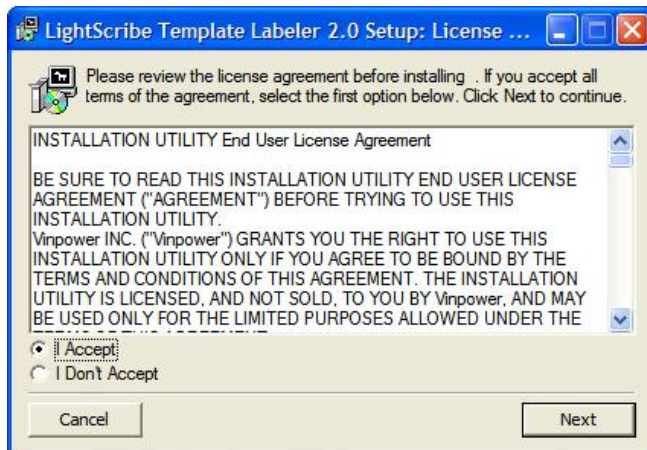
## Software Installation

1. Insert the LightScribe Installation Disc into the CD drive of your computer.
2. Using the “My Computer” icon or Windows Explorer, click on the CD drive
3. From the CD Drive, double-click the setup.exe to run the setup program.
4. Follow the Installation Wizard to start the installation process, see screen below:

5. During the installation process, you will be prompted for a Product Key. Such product key can be found on the Installation Disc.



6. You will then be asked to choose the LightScribe writer model that was installed in your duplication system. The default writer that comes with your system should be pre-selected. You can then click Install to continue the installation process.

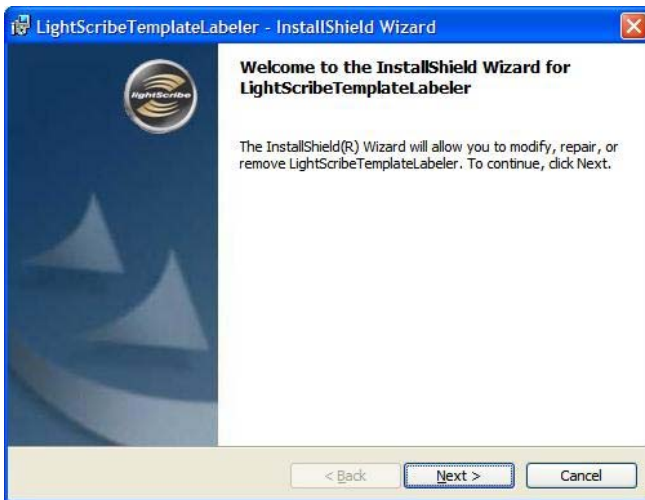


7. During the installation process, the following applications will be installed:

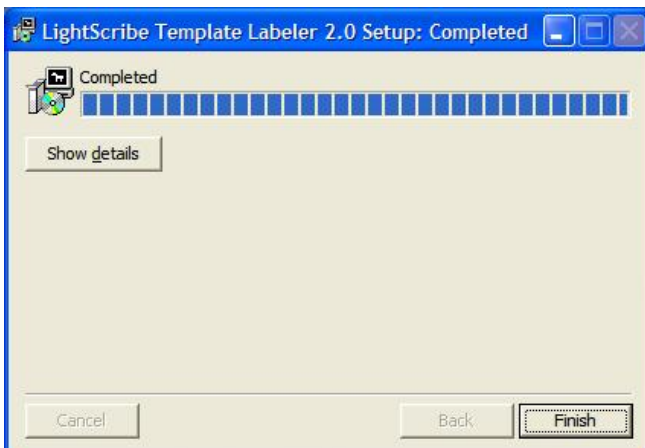
➤ **LightScribe System Software**



➤ **LightScribe Template Labeler**




8. Upon successful installation of the above software, click the Finish button to complete the installation.



## Software Quick Start User Guide

The following Quick Start Guide will demonstrate how to use the Template Labeler to generate the label files that can be used by the LightScribe Duplicator.

1. **Launch the *LightScribe Template Labeler***

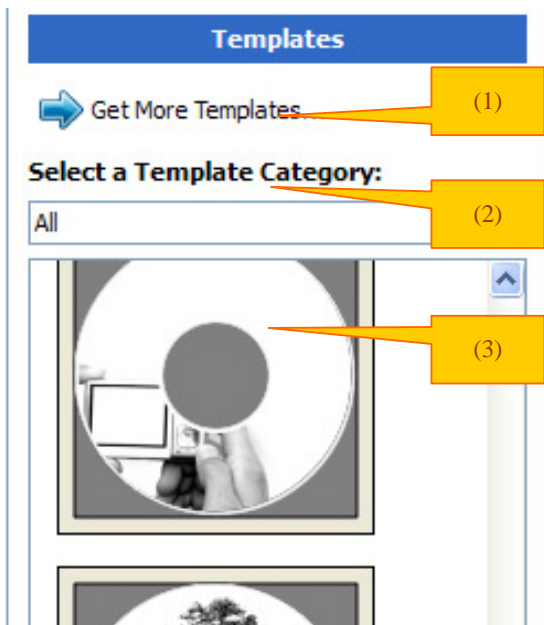
- click the shortcut  on your desktop
- Or you can find the program launch shortcut in *Start > All Programs > LightScribe Direct Disc Labeling > LightScribe Template Labeler*.

*Note: Since we use this software for design and layout purpose, please ignore the “LightScribe Disc Insertion” prompt below by pressing the OK button.*



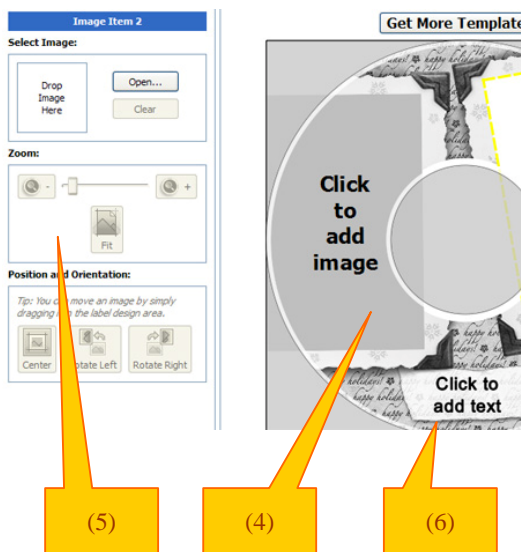
2. **Select Template**

- Choose one of the preinstalled templates, or click on "Get More Templates" to download additional templates. (1)
- Select the Category filter function to more easily view and choose a template. Note that each template may appear in multiple categories. (2)
- Click on Template choice to activate. (3)



### 3. Insert Text and/or Pictures

- Depending on the template chosen, you may have options to modify text box(es) or picture(s).
- For inserting pictures, just click on the dedicated area to select the picture you'd like to use. (4)
- Use the Zoom button or the scroll wheel of your mouse to size the picture, then drag it to position it within the selection window. (5)
- For text, just click on the text field, then type the text you'd like to appear within the text field. Note you can enter multiple lines of text depending on the template chosen. (6)



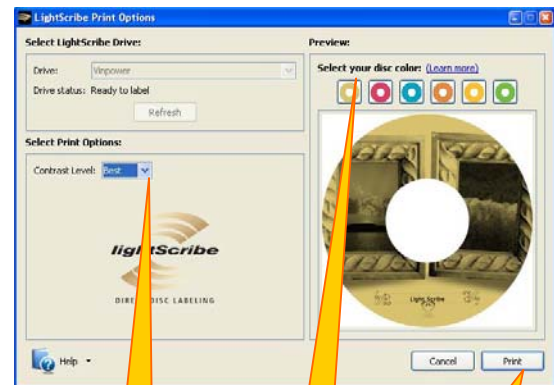
### 4. Preview and Print Label

- Click on "Preview and Print" to bring up the print window.
- Select the "Best" contrast mode for the darkest print. (7)
- Select the label surface color of the disc you wish to label onto. (8)
- Click "Print" to start the label file (.lsi files) generating process if you are satisfied with the preview. (9).



**Note**

*You will be asked for the location & the name of the lsi label file you wish to generate. In addition, due to the system display limitation, make sure the file name does not contain any foreign characters other than 26 Greek alphabets, numerical digits, and/or some basic symbols like “-“, etc.*



### 5. Create a Data CD with the generated label file(s)

- Locate the label file(s) (.lsi files) on your PC.
- Create a Data CD with one or more lsi label file(s) via a CD/DVD Creating Software; like Nero Burning-ROM.



**Note**

*Do NOT place label file(s) under any directory/folder of the Label CD. Failure to do so will result in the label file(s) not being recognized by your system.*

## 6. Using LightScribe Duplicator to print copies of your disc label

- Power On the LightScribe Duplicator



- Place the Data CD that contains the label files you wish to copy into the 1<sup>st</sup> (Top) Tray.



- Place all LightScribe media, **with printing surface facing down**, into the remaining writer trays.



- Go to menu "2. Print" by pressing UP or DOWN navigation buttons. Then press ">>>"/"ENT" key once to start the label printing process.



- Upon completion, the printed discs will be ejected.