

Software Installation & Quick Start Usage Guide



Minimum Hardware Requirements

1. Pentium 3 Class microprocessor or better
2. CD/RW Recorder
3. 32Mbytes of RAM
4. 10Mbytes of free disc space on your hard drive

Minimum Software Requirements

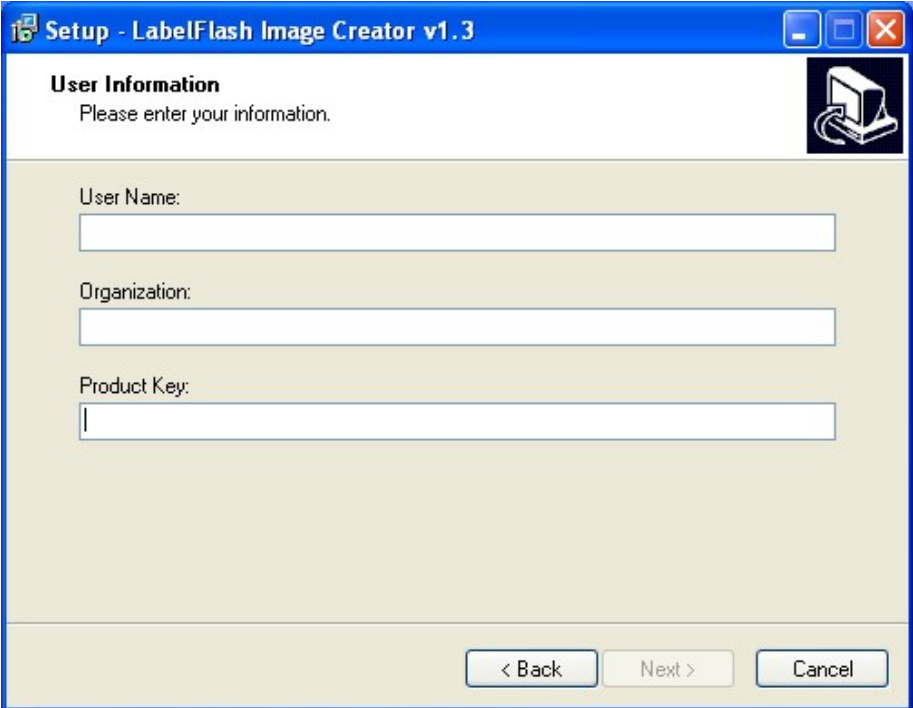
1. Windows 2000, XP, 2003 or Vista.

Software Installation

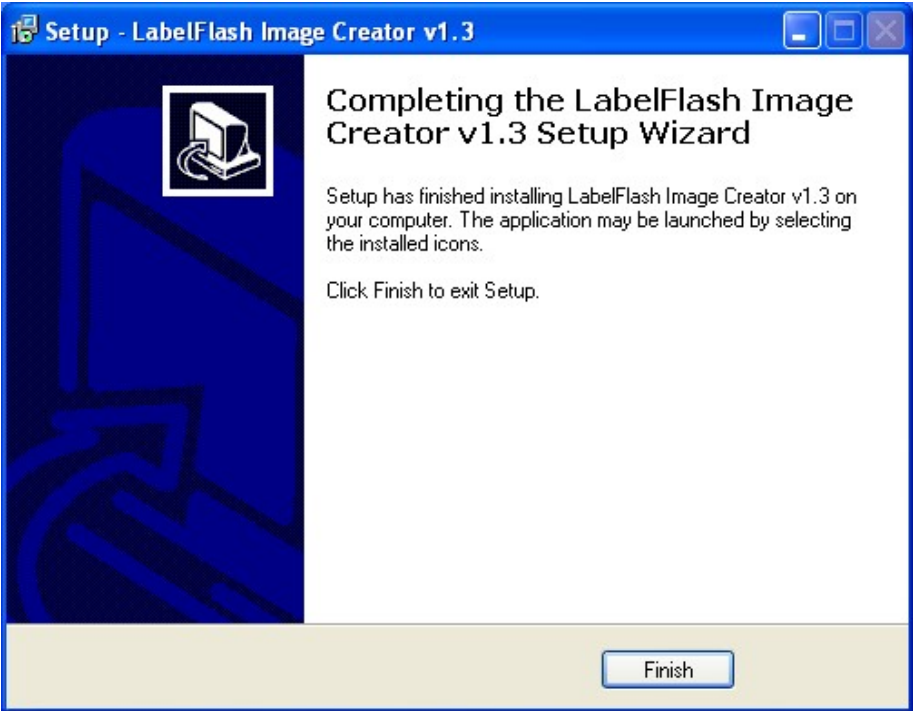
1. Insert the LabelFlash Installation Disc into the CD drive of your computer.
2. Using the “My Computer” icon or Windows Explorer, click on the CD drive
3. From the CD Drive, double-click the **labelFlash_v1.3.exe** to run the setup program.
4. Follow the Installation Wizard to start the installation process.



- 5. During the installation process, you will be prompted for a Product Key. Such product key can be found on the Installation Disc.



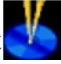
- 6. Upon successful installation of the above software, click the **Finish** button to complete the installation.



Software Quick Start User Guide

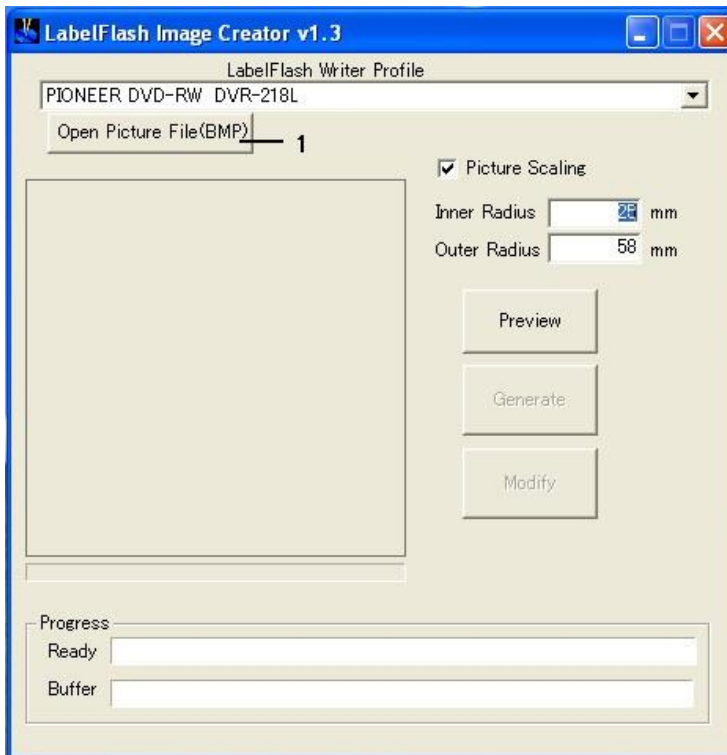
The following Quick Start Guide will demonstrate how to use the **LabelFlash Image Creator** to generate the label files that can be used by the LabelFlash Duplicator.

1. Launch the **LabelFlash Image Creator**

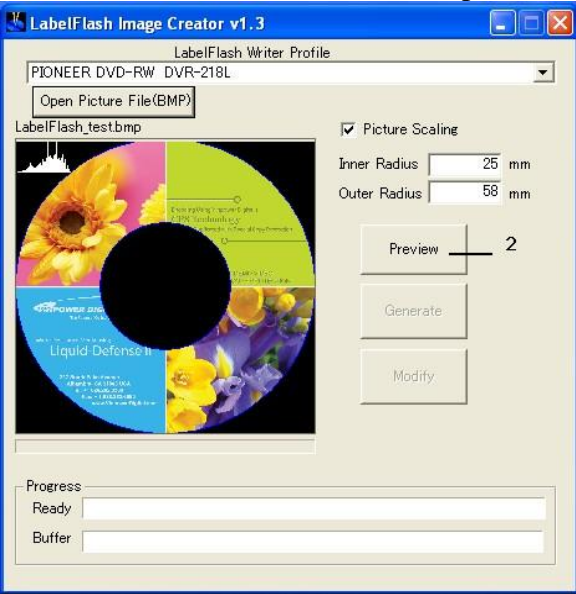
- Click the shortcut  on your desktop
- Or you can find the program launch shortcut in Start > All Programs > LabelFlash

2. Select Artwork

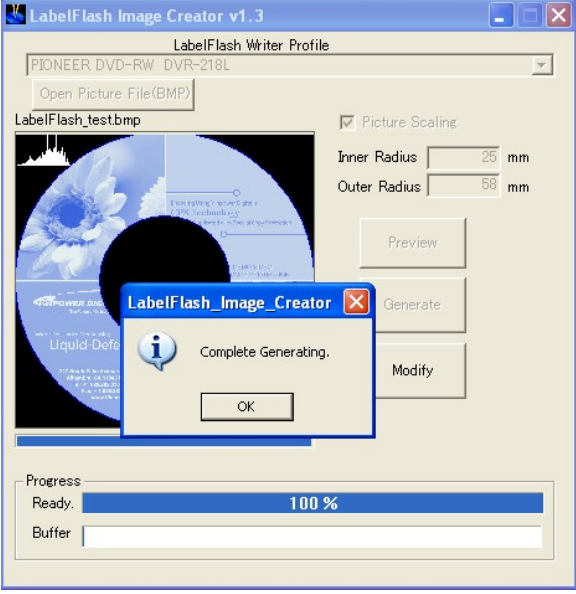
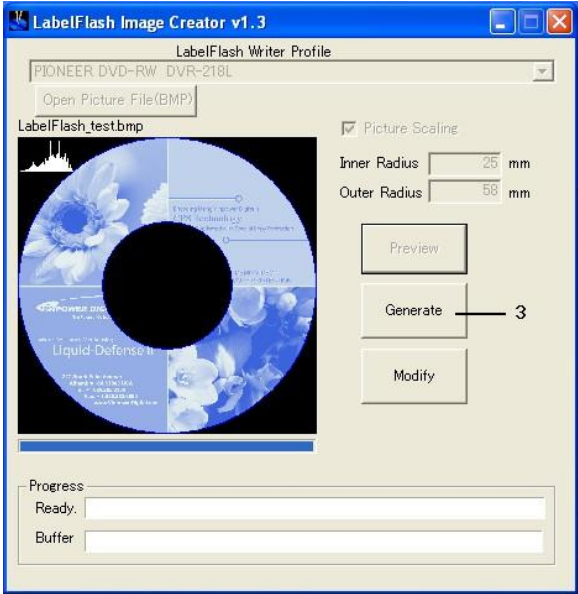
- Click the **Open Picture File (BMP)** to select the picture you'd like to use.



➤ Click the **Preview** to see the snapshot image.



➤ Click **Generate** to generate the LFI file. Or you can click **Modify** to change the artwork.



- 3. Create a Data Disc with the generated label file(s)
 - Locate the label files (.lfi files) on your PC.
 - Create a Data Disc with one or more lfi label file(s) via a CD/DVD Creating Software; like Nero Burning-Rom.