

Software Installation Guide for Accessing the Hard Drive on a Computer

Minimum Hardware Requirements:

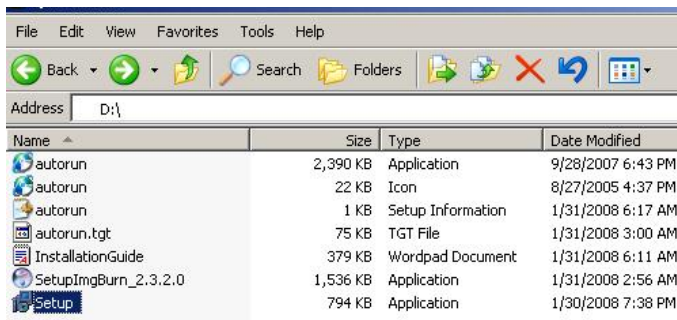
1. Pentium 3 Class microprocessor or better
2. USB 2.0 Type B Port
3. 32Mbytes of RAM
4. 10Mbytes of free disc space on your hard drive

Minimum Software Requirements:

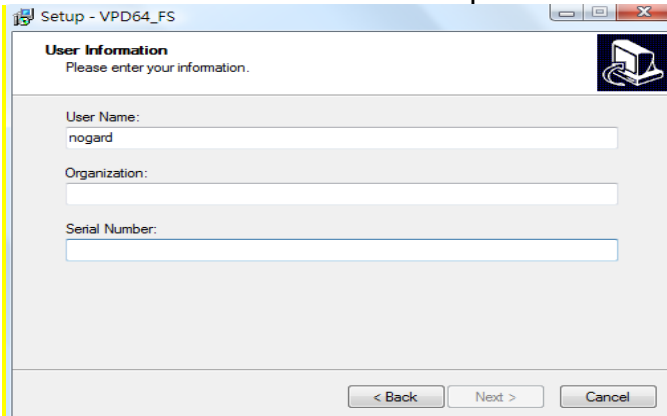
1. Windows 2000, XP, 2003 or Vista.

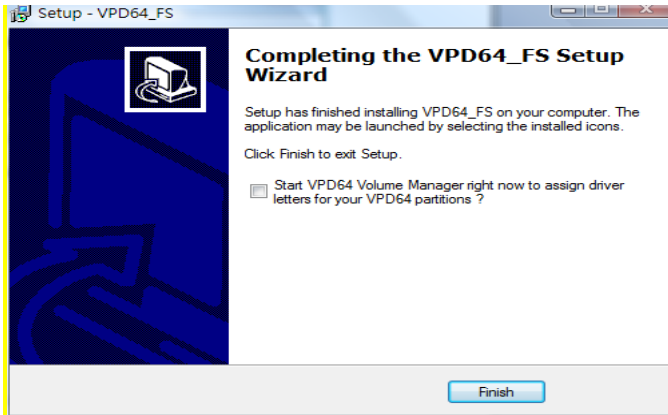
Installing File Duplicator Driver & Utility:

1. Insert the Installation CD.
2. Using the “My Computer” icon or Windows Explorer, click on the CD drive
3. Double-click Setup.exe Icon.



4. Follow Installation Wizard to complete the installation process.





5. Restart your PC to complete installation.

Using the File Duplicator Utility:

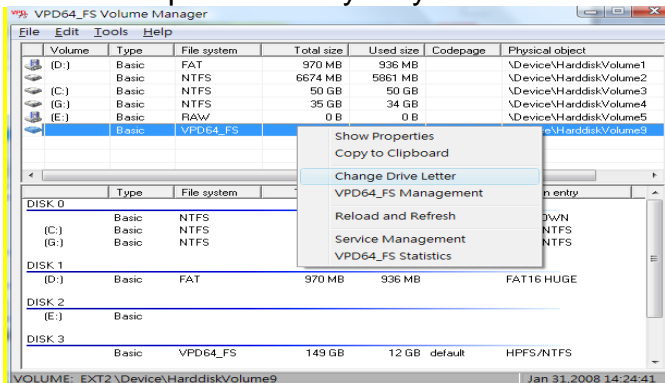
When using for the first time:

1. Power On the Duplicator & your PC
2. Turn On the “External USB Connection” setting under “Setup” on the Duplicator

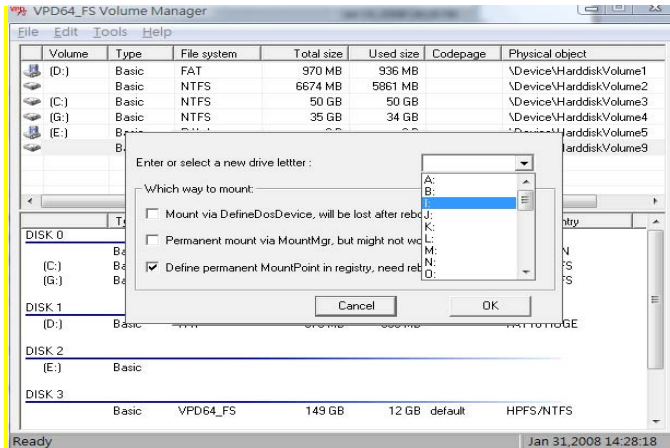
Setup
USB Connection

USB Connection
On

3. Restart the Duplicator when prompted.
4. Use a USB 2.0 Cable to connect the Duplicator to your PC.
5. The File Duplicator Utility on your PC should recognize a new Drive Partition



6. Mount the Drive Partition to one of the free Drive Letters.



7. Your PC should now have a drive partition ready to access.



When using the duplicator again after completing the above steps on the same PC:

Step 1: Power On the Duplicator and your PC

Step 2: Go to the Duplicator's Setup menu pressing the UP or DOWN arrow button, then press the >> button to enter the menu.



Step 3: Navigate to “USB Connection” submenu by pressing the UP or DOWN arrow button.

```
Setup
15. USB Connection
```

Step 4: Press the >> button to enter the Auto Start setting and you shall see a screen similar to below:

```
USB Connection
Off
```

Step 5: Use the up or down arrow button to change the value to “On”.

```
USB Connection
On
```

Step 6: Press the >> button to submit the change. Once completed, the duplicator will restart automatically or you will be asked to restart the duplicator.

Step 7: Use a USB 2.0 Cable to connect the Duplicator to your PC.

Step 8: You PC should now have a drive partition ready to access.



The screenshot shows a Windows 'My Computer' window with the following content:

Hard Disk Drives		
SYS (C:)	Local Disk	19.9 GB
Duplicator (I:)	Local Disk	278 GB

Devices with Removable Storage	
3½ Floppy (A:)	3½-Inch Floppy Disk
DVD-RAM Drive (D:)	CD Drive