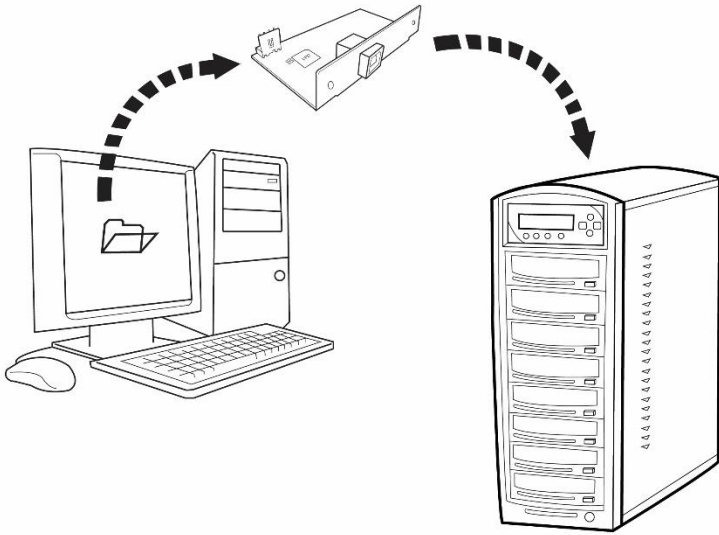


# Copy Connect Software Installation Guide



Version 2.0

Copyrights © 2020. All rights Reserved

## Software/Driver Installation

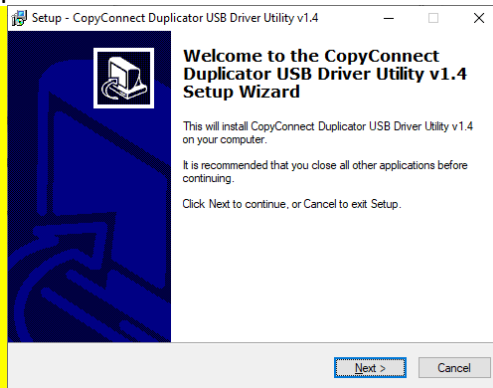
- **Minimum Hardware Requirements:**
  1. Pentium 3 Class microprocessor or better
  2. USB 2.0 Type B Port
  3. 32Mbytes of RAM
  4. 10Mbytes of free disc space on your hard drive
- **Minimum Software Requirements:**
  1. Windows 2000, XP, Vista, 7, 8, 8.1, 10.
- **Installing File Duplicator Driver & Utility:**
  1. Insert the Installation CD.
  2. Software Installation Webpage should be automatically loaded. If not, Using the “My Computer” icon or Windows Explorer, click on the CD drive, and double click on the “index.html”



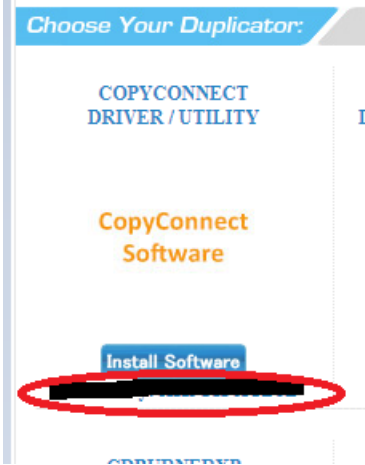
3. Click on the “Install Software” button under CopyConnect Driver/Utility:



4. Follow Installation Wizard to complete the installation process.



5. When prompted for Product Key, please type the product key on the Installation Page



6. Restart your PC to complete installation.



# 1. Establish a connection between your PC and the Duplicator's Hard Drive:

When establishing a connection for the first time on a PC:

**Step 1:** Power On the Duplicator and your PC

**Step 2:** Go to the Duplicator's Setup menu by pressing the UP or DOWN arrow button, then press the ENT/Enter button to enter the menu.

<b>DUPLICATOR</b>	<b>5.52</b>
<b>11. Setup</b>	

**Step 3:** Navigate to the "External Connection" submenu by pressing the UP or DOWN arrow button.

<b>Setup</b>
<b>15. External Connection</b>

**Step 4:** Press the ENT/Enter button to enter the "External Connection" setting and you shall see a screen similar to below:

<b>External Connection</b>
<b>Off</b>

**Step 5:** Use the up or down arrow button to change the value to "On".

<b>External Connection</b>
<b>On</b>

**Step 6:** Press the ENT/Enter button to submit the change. Once completed, the duplicator will make the hard drive available for computer via external connection.

*Note: You may be asked to restart the system during the process.*

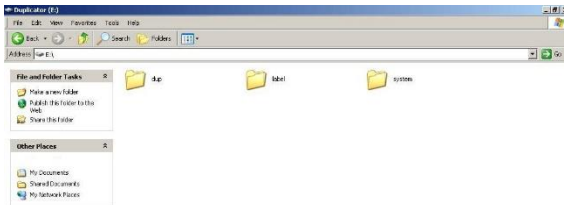
**Step 7:** Use an USB Cable to connect the Duplicator to your PC.

**Step 8:** The PC should now have a drive partition titled “Duplicator” ready to access.



## 2. Transfer a Master Disc Image or LightScribe Label file from your Computer to the Duplicator's Internal Hard Drive

**Step 1:** Once you have established a connection between the computer and the duplicator, you should be able to access the hard drive from the duplicator on your PC:



The duplicator's hard drive contains the following folders:

- **“dup”** – This is the folder where you can drop your pre-generated ISO CD/DVD/BD image files/folders into.
- **“label”** – This is the folder where you can drop your pre-generated LSI LightScribe label file(s) into.
- **“system”** - This is the folder where the duplicator stores system related information. It is not meant to be modified/deleted in anyway.

Now you can transfer the Master Disc Image(iso) file(s) or LSI LightScribe label file(s) on your computer into the “dup” folder on the duplicator's hard drive.

**Step 2:** Once the transfer process is complete, please disconnect the USB connection by using the “Unplug or Eject Hardware” icon on your PC to safely remove it from your computer.



**Step 3:** Now you can go to the Duplicator's Setup menu,

<b>DUPLICATOR</b>	<b>5.52</b>
<b>11. Setup</b>	

**Step 4:** Navigate to the "USB Connection" submenu by pressing the UP or DOWN arrow button.

<b>Setup</b>
<b>15. External Connection</b>

**Step 5:** Press the ENT/Enter button to enter the USB Connection setting and you shall see a screen similar to below

<b>External Connection</b>
<b>On</b>

**Step 6:** Use the up or down arrow button to change the setting to "Off".

<b>External Connection</b>
<b>Off</b>

**Step 7:** Press the ENT/Enter button to submit the change. Once completed, the duplicator will make the hard drive available for computer via external connection.

*Note: You may be asked to restart the system during the process.*

**Step 8:** After the system restarts, your duplicator should recognize the internal hard drive and you will be able to copy the image files you've just transferred on to the blank media using the Duplicator.