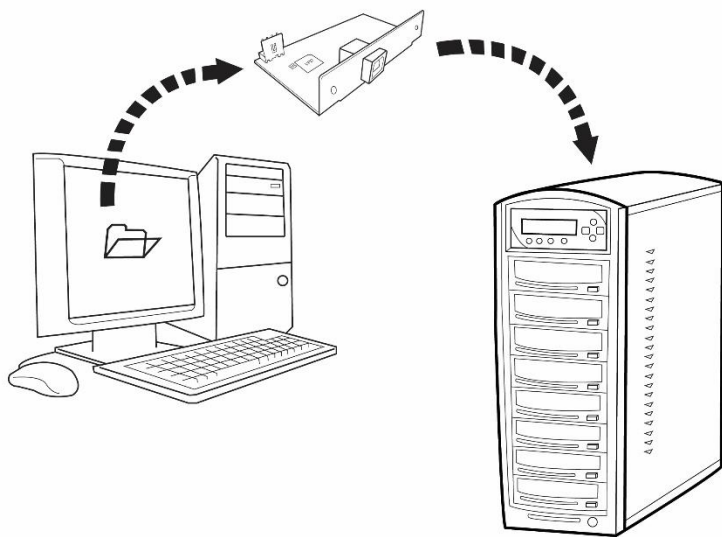


Copy Connect for Mac Software Installation Guide

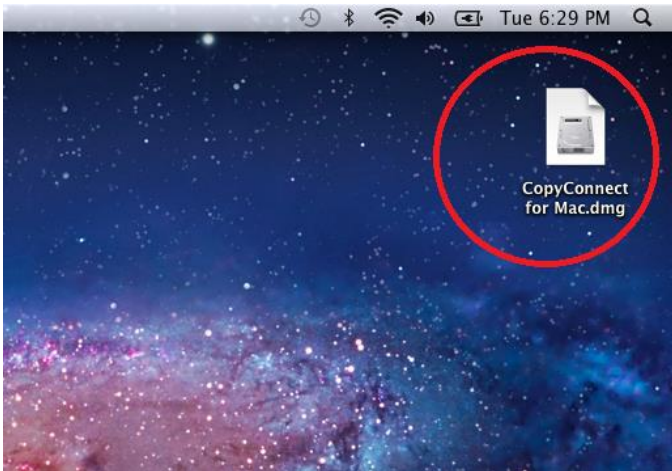


Version 2.2

Copyrights © 2017. All rights Reserved

1. Software/Driver Installation

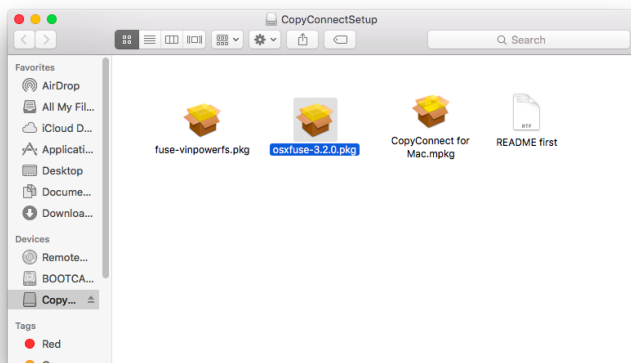
- **Minimum Hardware Requirements:**
 - ✓ Mac Computer
 - ✓ USB 2.0 Type B Port
 - ✓ 10Mbytes of free disc space on your hard drive
- **Software Requirements:**
 - ✓ Mac OS X, please check with the download page for exact OS X version compatibility.
- **Installing CopyConnect for Mac Utility:**
 - a) Please download the compressed zip file and extract the installation DMG file to the desktop.
Note: When prompted for password, please use the product key (in following format: xxxxx-xxxx).



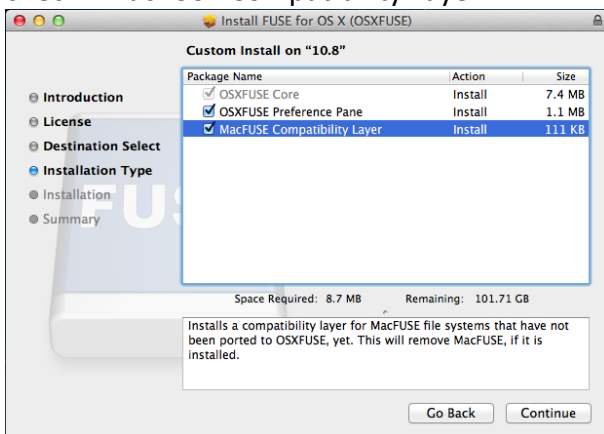
- b) Please open “System Preferences” and check your “Security & Privacy” setting. Please make sure to set “Allow applications downloaded from:” to “Anywhere”.



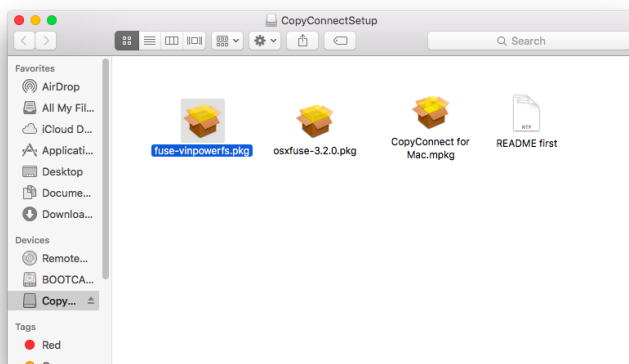
- c) Double click on the DMG file to mount it.
- d) Double click on “OSXFUSE xxx.pkg” to start installation of “OSXFUSE”.



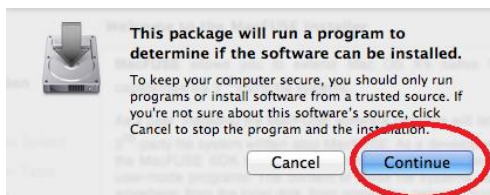
- e) When prompted for the “Installation Type”, please check “MacFUSE Compatibility Layer”.



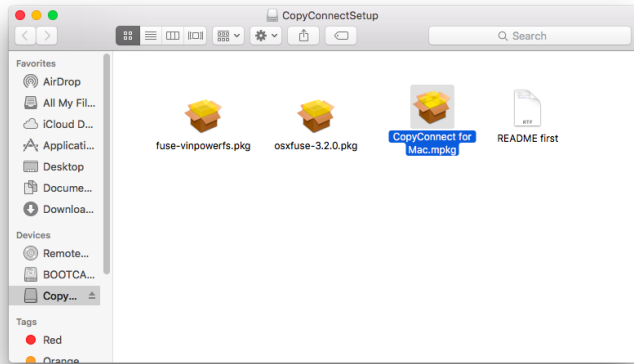
- f) Double click on “fuse-vinpowerfs.pkg” to start installation of “fuse-VinpowerFS”.



Note: You may see following message during installation, please click Continue.



- g) Double click on “CopyConnect for Mac.mpkg” to start installation of “CopyConnect for Mac”.



Note: You may see following message during installation, please click Continue.



- h) Unmounts the installation DMG file by click on “Eject CopyConnect Volume” from File menu.

2. Establish a connection between your PC and the Duplicator's Hard Drive:

- a) Power On the Duplicator and your PC
- b) Go to the Duplicator's Setup menu by pressing the UP or DOWN arrow button, then press the ENT/Enter button to enter the "Setup" menu.

DUPLICATOR	5.47
11. Setup	

- c) Navigate to the "External Connection" submenu by pressing the UP or DOWN arrow button.

Setup
15.External Connection

- d) Press the ENT/Enter button to enter the "External Connection" setting and you shall see a screen similar to below:

External Connection
Off

- e) Use the up or down arrow button to change the value to "On".

External Connection
On

f) Press the ENT/Enter button to submit the change. Once completed, the duplicator will make the hard drive available for computer via external connection.

Note: You may be asked to restart the system during the process.

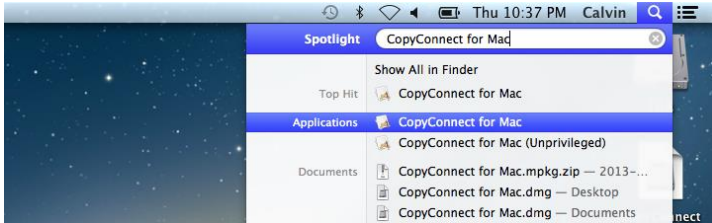
g) Connect the Duplicator to your PC via corresponding external cable. (ex. USB, eSATA, etc)

h) Your computer will pop out a message claiming that it is not readable. It is normal and please click on "Ignore".



3. Using CopyConnect for Mac to transfer image file to the duplicator:

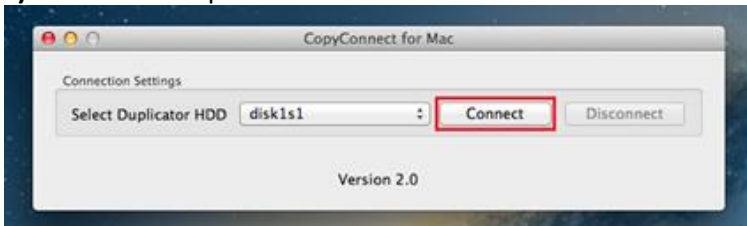
a) Run the “CopyConnect for Mac” software in “Applications” folder.



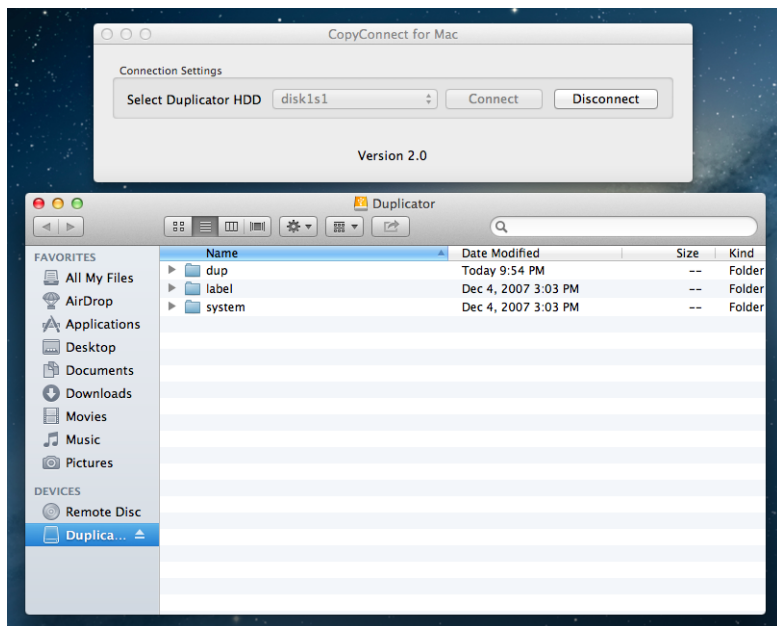
b) You may be asked for the user password to grant proper permission to the application



c) Select the duplicator's hard drive and click on Connect button.



d) Now the a drive will be moutned to your system and you can now have access to the duplicator's hard drive natively.



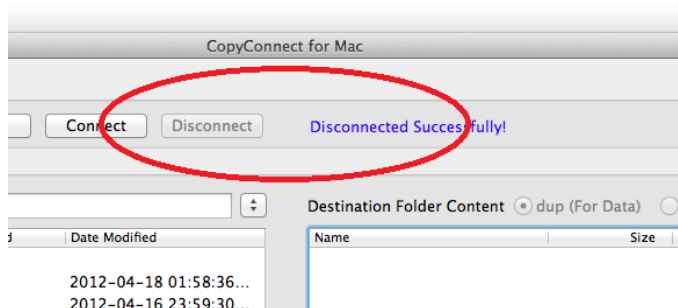
The duplicator's hard drive contains the following folders:

- **"dup"** – This is the folder where you can drop your pre-generated ISO CD/DVD/BD image files into.
- **"label"** – This is the folder where you can drop your pre-generated LSI LightScribe label file(s) into.
- **"system"** - This is the folder where the duplicator stores system related information. It is not meant to be modified/deleted in anyway.

e) You can now transfer your disc image / disc label files to the corresponding folder.

f) Disconnect the CopyConnect connection after you have transferred all files.

Note: It is IMPORTANT to disconnect the CopyConnect connection prior closing the application. Failure to do so may corrupt the content on the duplicator's hard drive.



4. Disconnect the connection between your PC and the Duplicator's Hard Drive.

- i) Go to the Duplicator's Setup menu by pressing the UP or DOWN arrow button, then press the ENT/Enter button to enter the "Setup" menu.

DUPLICATOR	5.47
11. Setup	

- j) Navigate to the "External Connection" submenu by pressing the UP or DOWN arrow button.

Setup
15.External Connection

- k) Press the ENT/Enter button to enter the "External Connection" setting and you shall see a screen similar to below:

External Connection
On

- l) Use the up or down arrow button to change the value to "Off".

External Connection
Off

m) Press the ENT/Enter button to submit the change. Once completed, the duplicator will make the hard drive available for computer via external connection.

Note: You may be asked to restart the system during the process.

n) Disconnect the Duplicator from your PC by removing corresponding external cable. (ex. USB, eSATA, etc).